

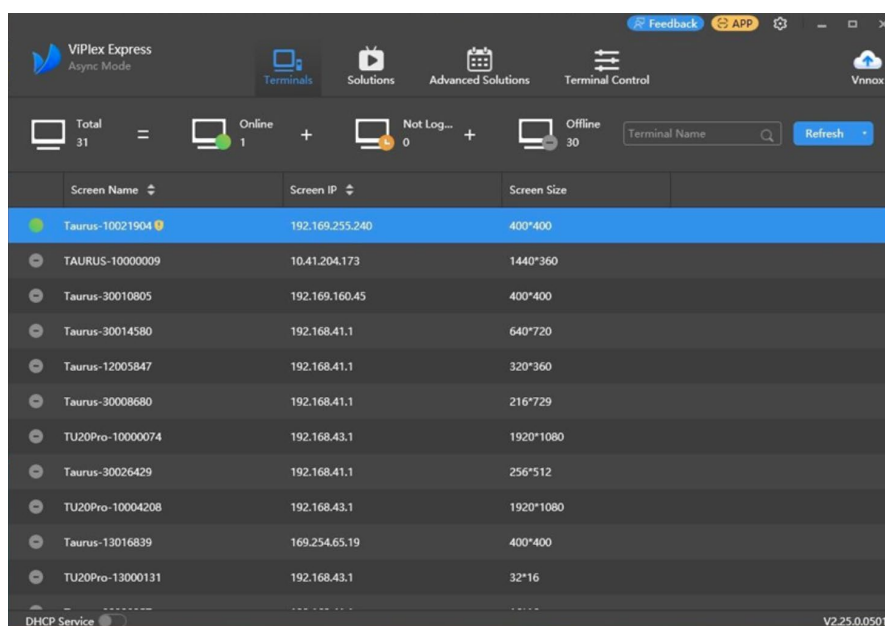
NovaStar Supported Models with Navori QL

(T30, T40, T50, T60, T30-J, T50-J, T60-J)

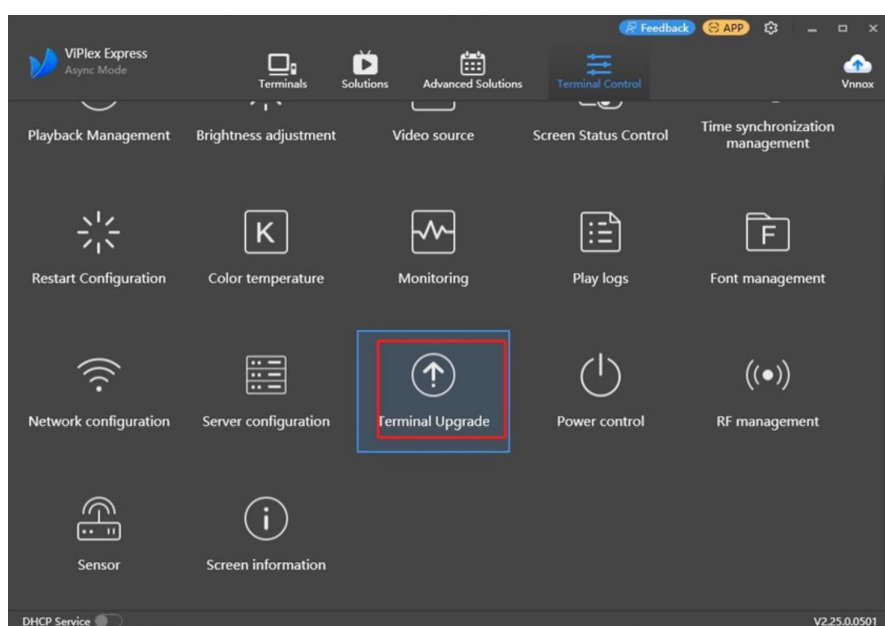
Navori QL supports the NovaStar T-series players listed above. For optimal performance and seamless integration, ensure that your NovaStar controller is running the latest firmware.

Please follow the steps to upgrade custom **firmware version 4.5.6** provided by NovaStar.

1. Connect the device with the viplex

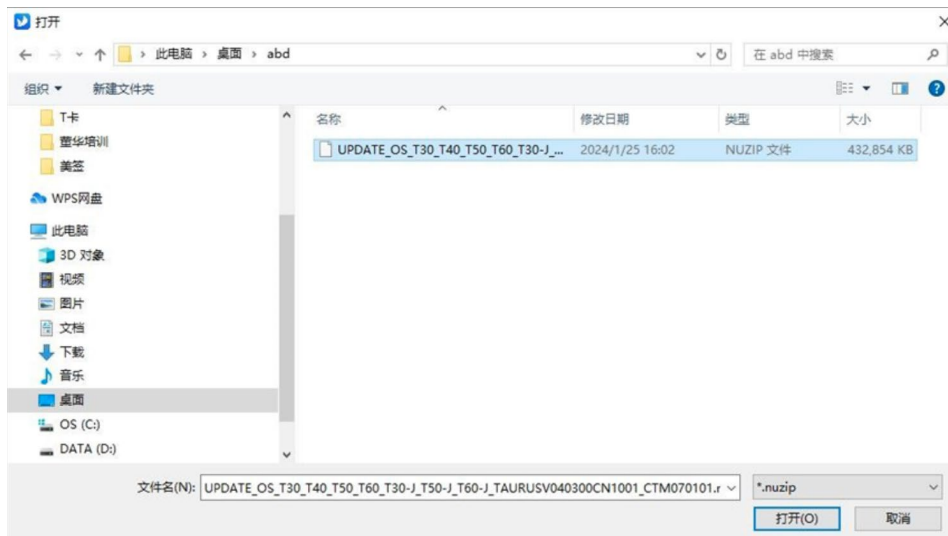
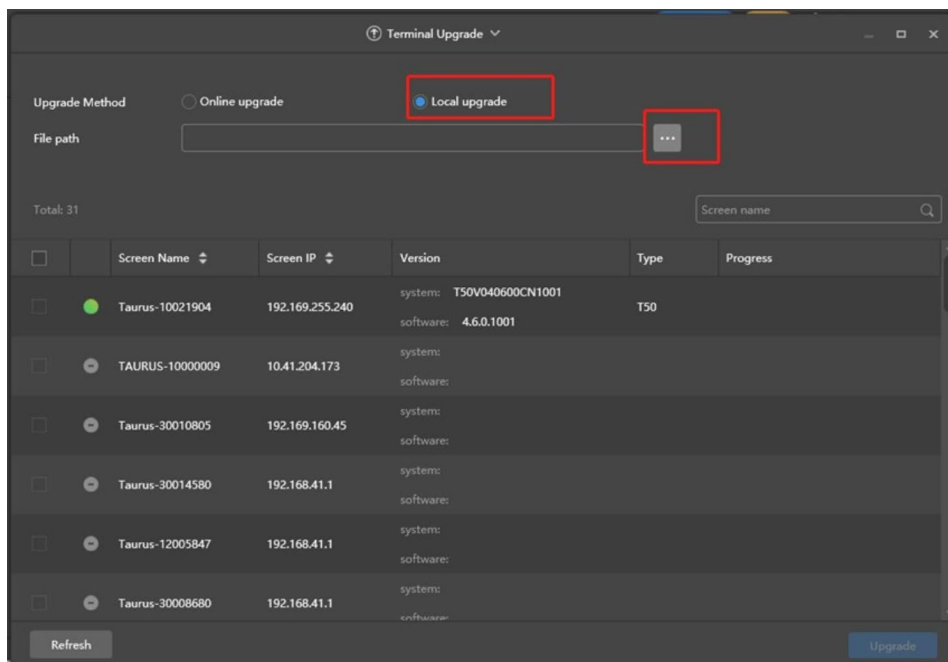


2. Select firm terminal upgrade.



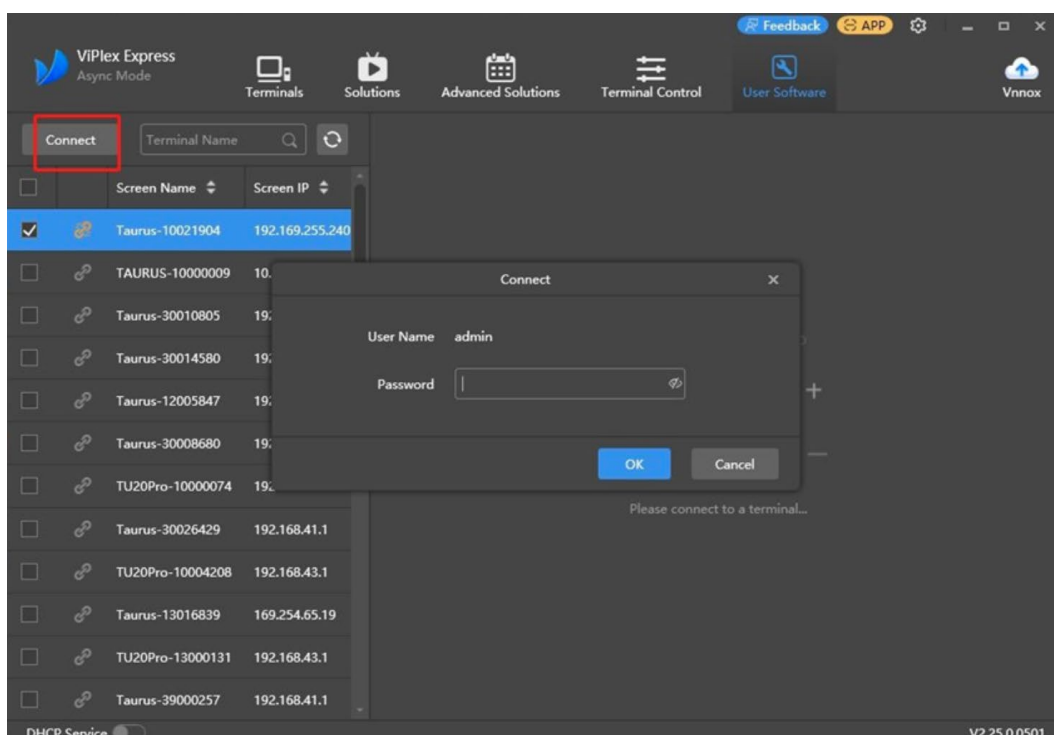
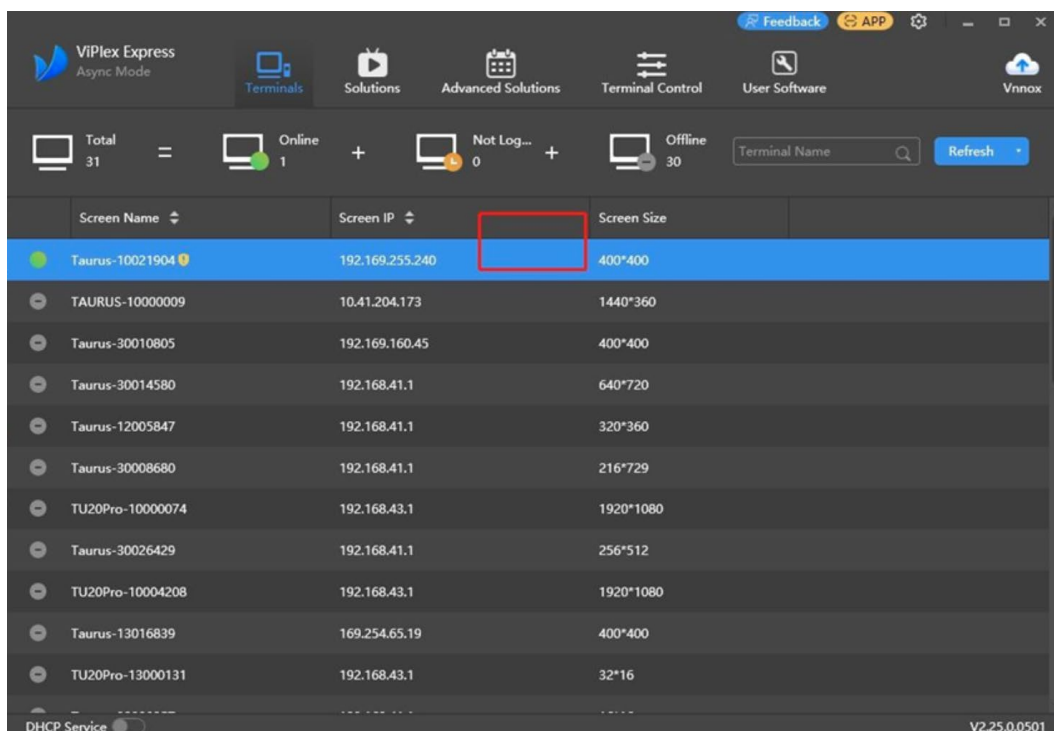
3. Select local upgrade and select the corresponding file Firmware version 4.6.5

[UPDATE_OS_T30_T40_T50_T60_T30-J_T50-J_T60-J_TAUROSV040300CN1001_CTM070101.nuzip](#)

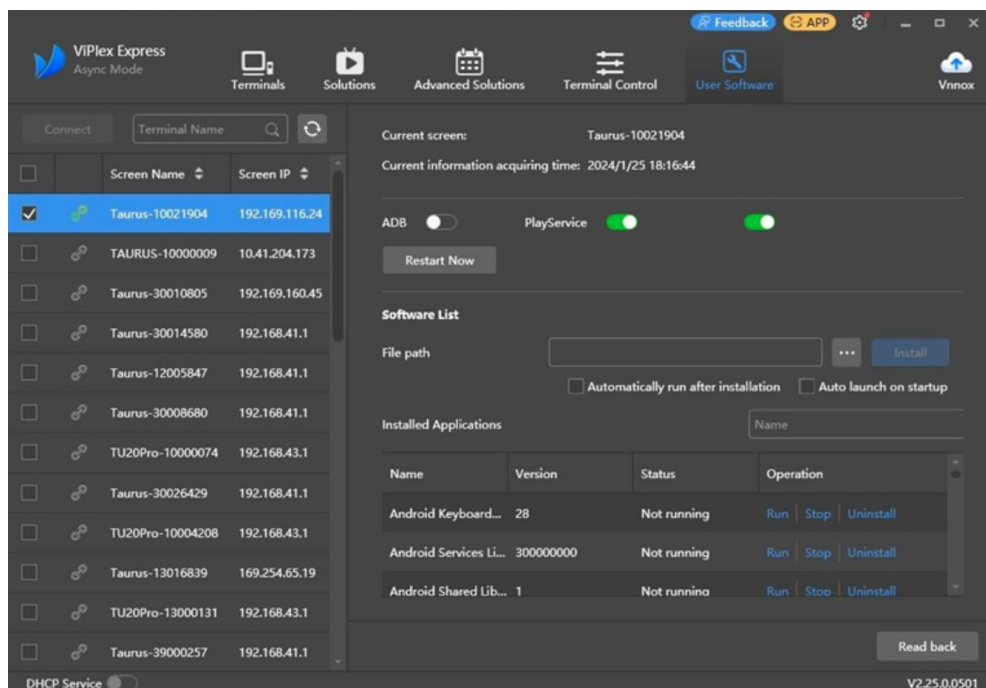


4. Then click to upgrade

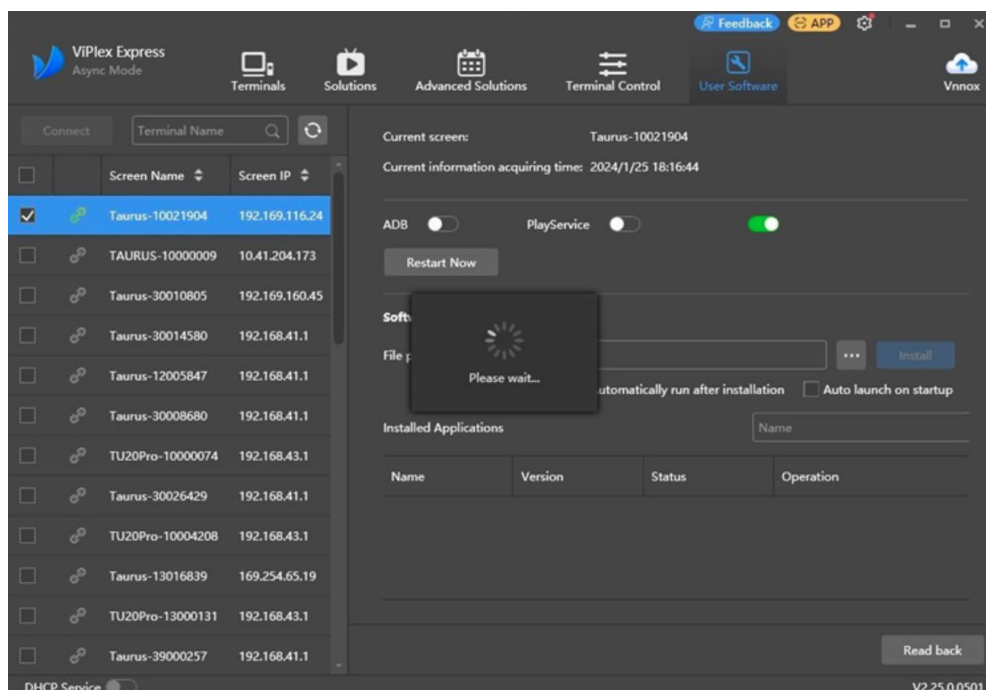
5. Place the mouse in the red box area and blindly type novasoftware on the keyboard. The user software interface will appear.



6. After logging in, you can see the apk installation interface



7. Close play service

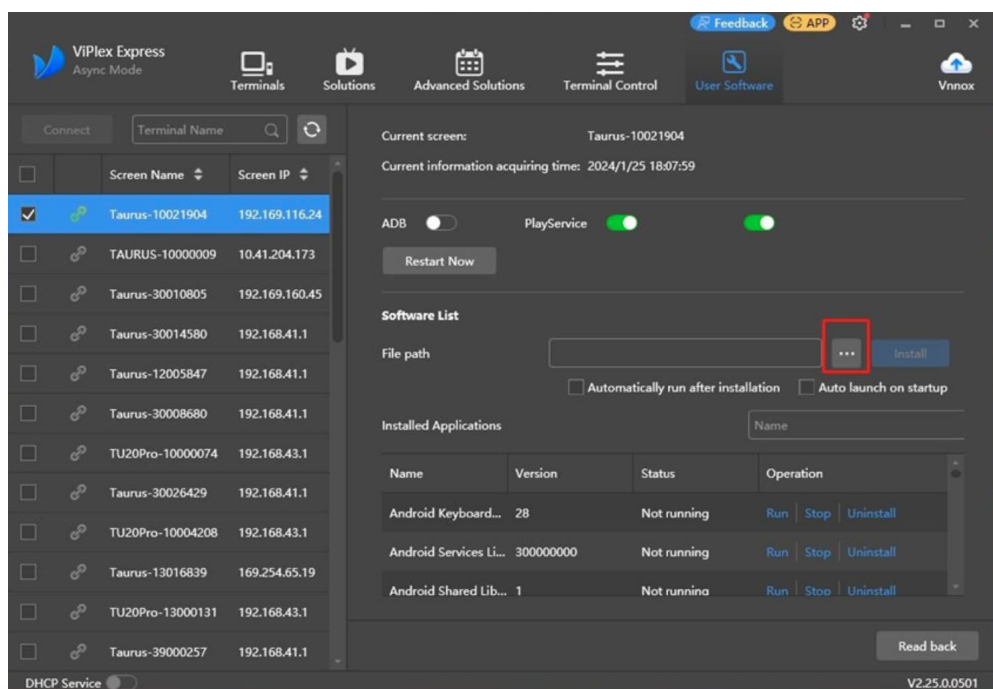


Afterward, you will need to download the generic conductor APK file from the QL Manager CMS. You can find the download link in the following location:

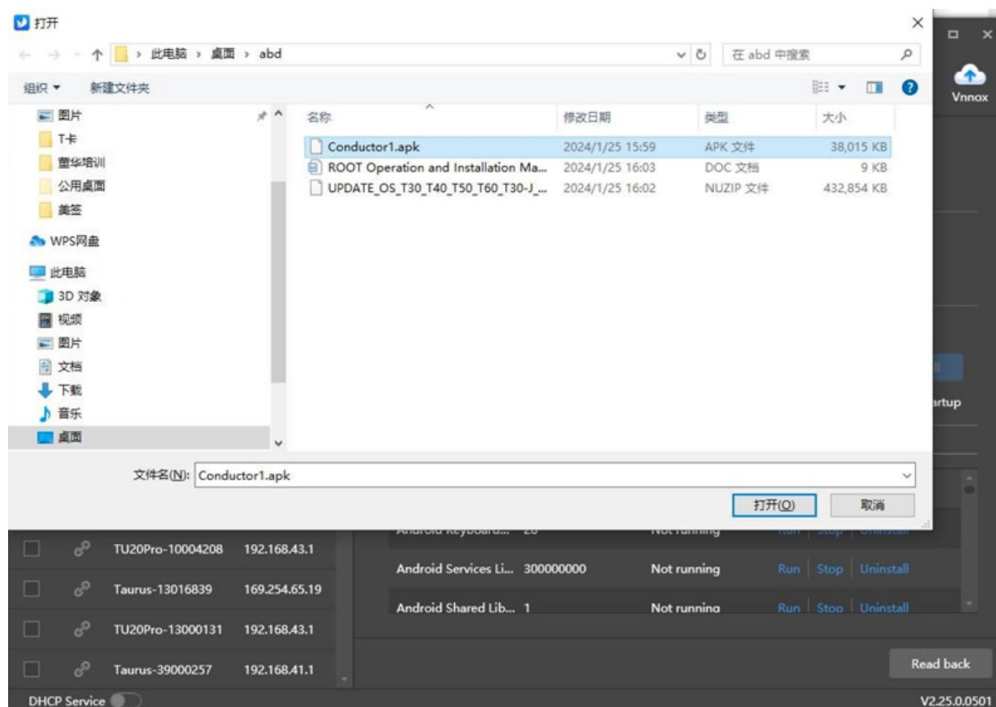
- Log in to your CMS account.
- Go to the **Main Menu** (top right corner).
- Navigate to **Player Management**.
- Select **Download QL Player**.

Brand	Model	Server URL to use for activation	Installer	
BrightSign	XT5, XD5, HD5, LS5	https://navori.jdmolecule.com/	Download	Setup Guide
ChromeOS	Any ChromeOS device	https://navori.jdmolecule.com/QLPlayer/index.html		Setup Guide
Generic	Any Android device	https://navori.jdmolecule.com/	Download	Setup Guide
Innes	Qeedji TAB10, Qeedji AMP300	https://navori.jdmolecule.com/	Download	Setup Guide
Innes	Qeedji DMB400, Qeedji SMA300	https://navori.jdmolecule.com/setup/navoriqlplayer.gap		Setup Guide
LG	webOS 4.0, webOS 6.0	https://navori.jdmolecule.com/setup/navoriqlplayer.ipk		Setup Guide
Navori	Stix 3700	https://navori.jdmolecule.com/	Download	Setup Guide
Navori	Stix 3800	https://navori.jdmolecule.com/	Download	Setup Guide
Philips	D Line 2021 - Android 8	https://navori.jdmolecule.com/	Download	Setup Guide
Samsung	Tizen 6.5, Tizen 7.0	https://navori.jdmolecule.com/setup		Setup Guide
Sony	BRAVIA VH1 - Android 10	https://navori.jdmolecule.com/	Download	Setup Guide
Windows	QL Player Standard - Windows 64 bits	https://navori.jdmolecule.com/	Download	Setup Guide
Windows	QL Player IPR 64 bits (Add-on IPR required)	https://navori.jdmolecule.com/	Download	Setup Guide

Click the red box, select 'Install APK', and make sure to enable the checkboxes for 'Automatically run after installation' and 'Auto-launch on startup'.



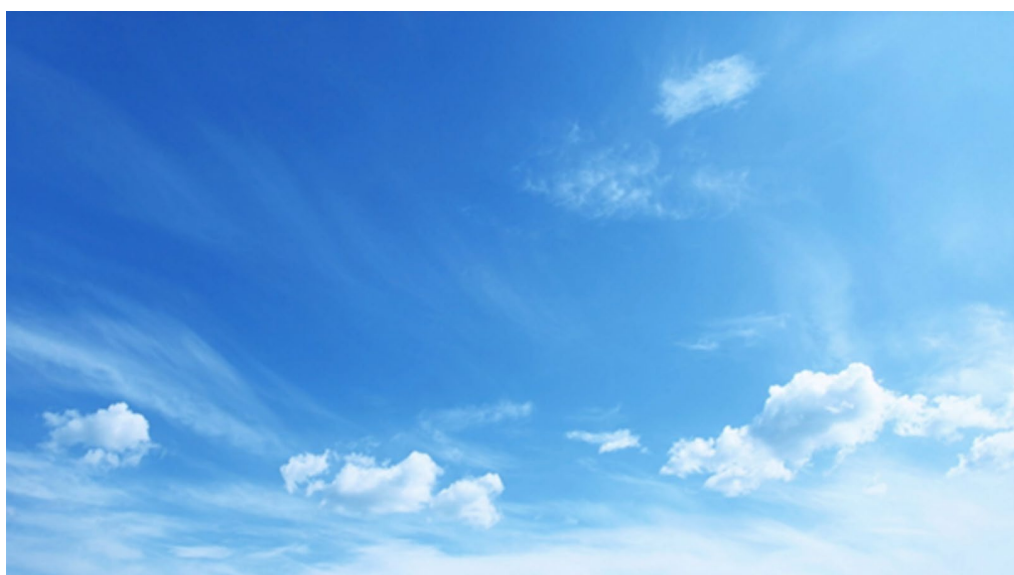
8. Select apk path to complete the installation



After successfully installing the APK file, you will see the activation page on the output display of the media player.

Please enter the required details, ensure all necessary parameters are checked, and then click on **Activate** to complete the process.

The device will restart automatically, and default media will display, indicating successful installation. The player will appear as online (GREEN) in the CMS shown as below images.



now the procedure is complete player is ready to publish.