

QL Server Setup Guide (On-Premise)

- **Installing Microsoft SQL Server**

(a) Navori QL requires Microsoft SQL Server, in either SQL Express (less than 50 players) or SQL Standard

(b) If you wish to use an existing SQL Server (must be at least SQL 2012 R2) with QL 2.2.5 and above requires a minimum of Windows Server 2016 and [SQL Server 2016](#) and above.

(c) The version of SQL must be compatible with the Windows version of the server

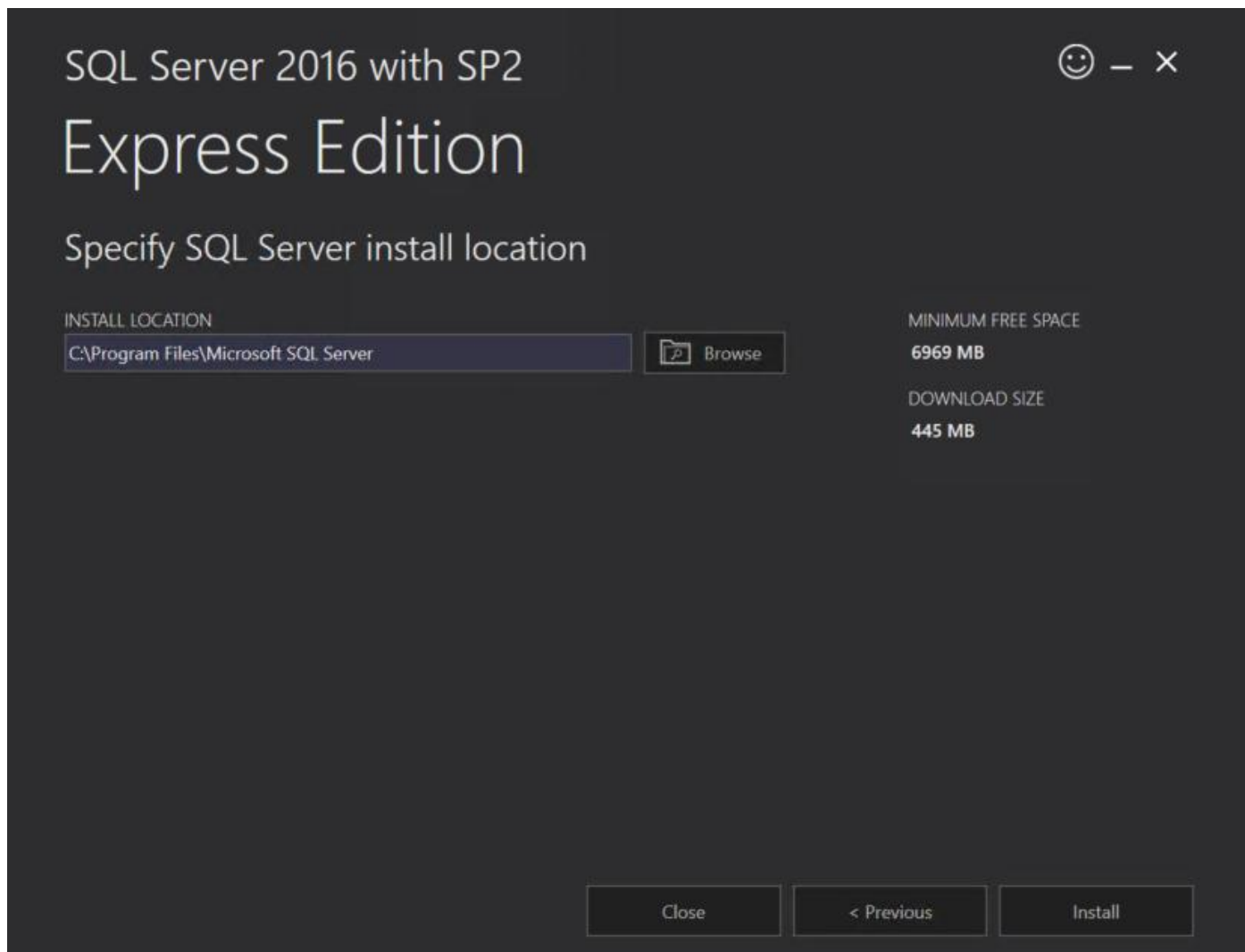
(d) IMPORTANT : Make sure current user access during installation is Administrator

Note- For QL 2.0 and above you must install Windows Server 2016: use [SQL Server 2016](#) or greater version

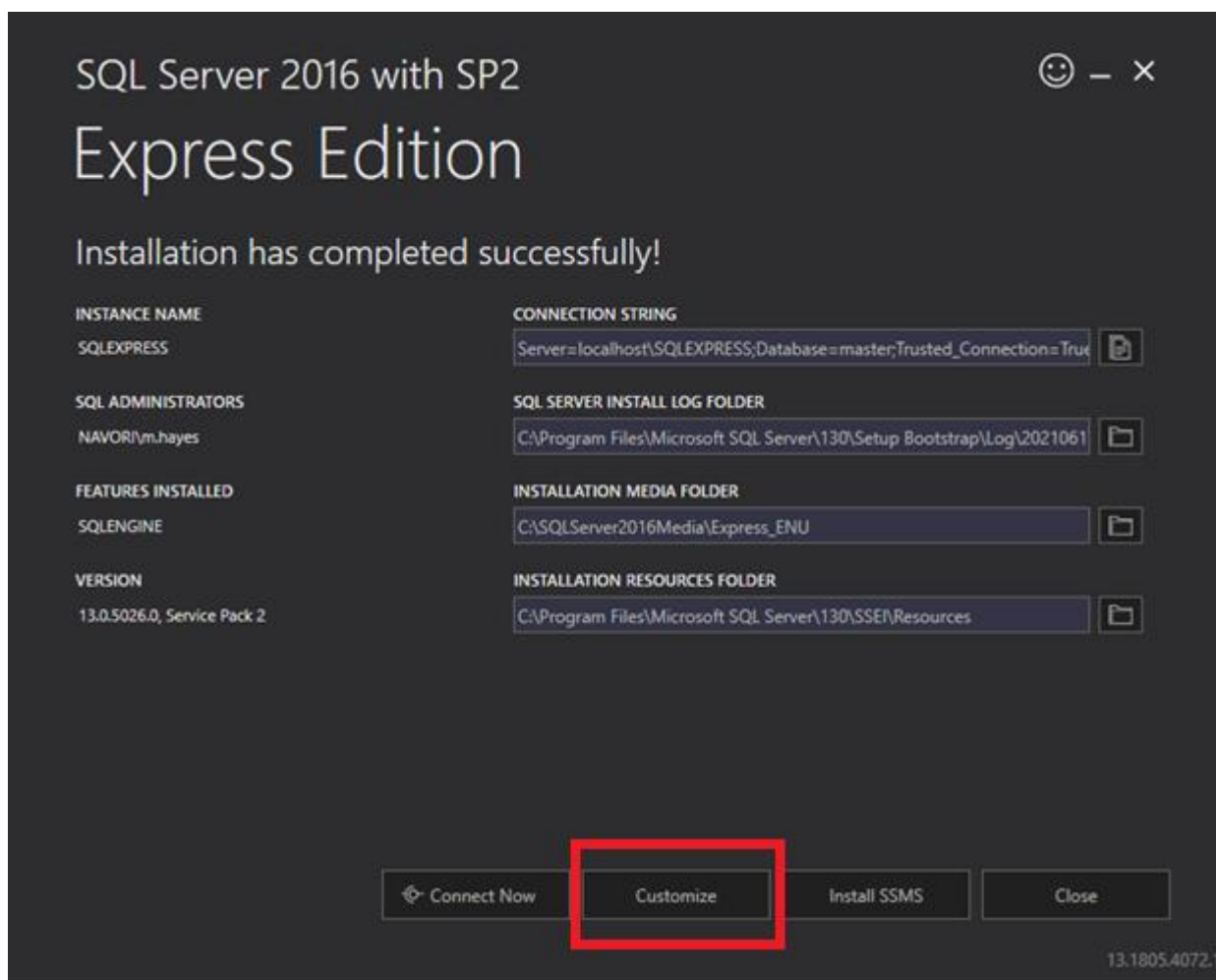
Microsoft SQL Server can be installed on the same PC on which you are installing Navori QL Server, or it can be installed on a remote PC.

1. Launch the SQL Installer and click BASIC.
Accept the TERMS & CONDITIONS and click INSTALL

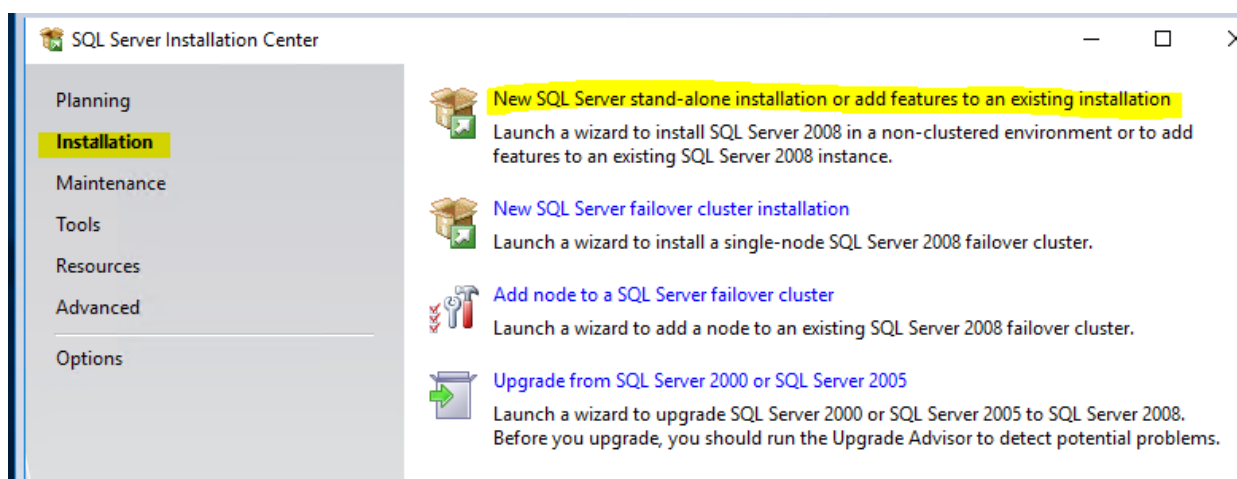




2. Once installed Select CUSTOMIZE



3. Select **New SQL Server Stand-alone installation or add features to an existing installation**.



4. Accept terms of services, and click **Next**
5. Leave **Use Microsoft Updates** unchecked, and click **Next**
6. Allow the Install setup to run. Once completed, click **Next**

SQL Server 2016 Setup

Install Rules

Setup rules identify potential problems that might occur while running Setup. Failures must be corrected before Setup can continue.

Global Rules
Product Updates
Install Setup Files
Install Rules
Installation Type
License Terms
Feature Selection
Feature Rules
Instance Configuration
Server Configuration
Database Engine Configuration
Feature Configuration Rules
Installation Progress
Complete

Operation completed. Passed: 4. Failed 0. Warning 1. Skipped 0.

Hide details <<

Re-run

[View detailed report](#)

	Rule	Status
✓	Fusion Active Template Library (ATL)	Passed
✓	Consistency validation for SQL Server registry keys	Passed
✓	Computer domain controller	Passed
✓	Microsoft .NET Application Security	Passed
⚠	Windows Firewall	Warning

< Back

Next >

Cancel

7. Select the features as per the screenshot below:

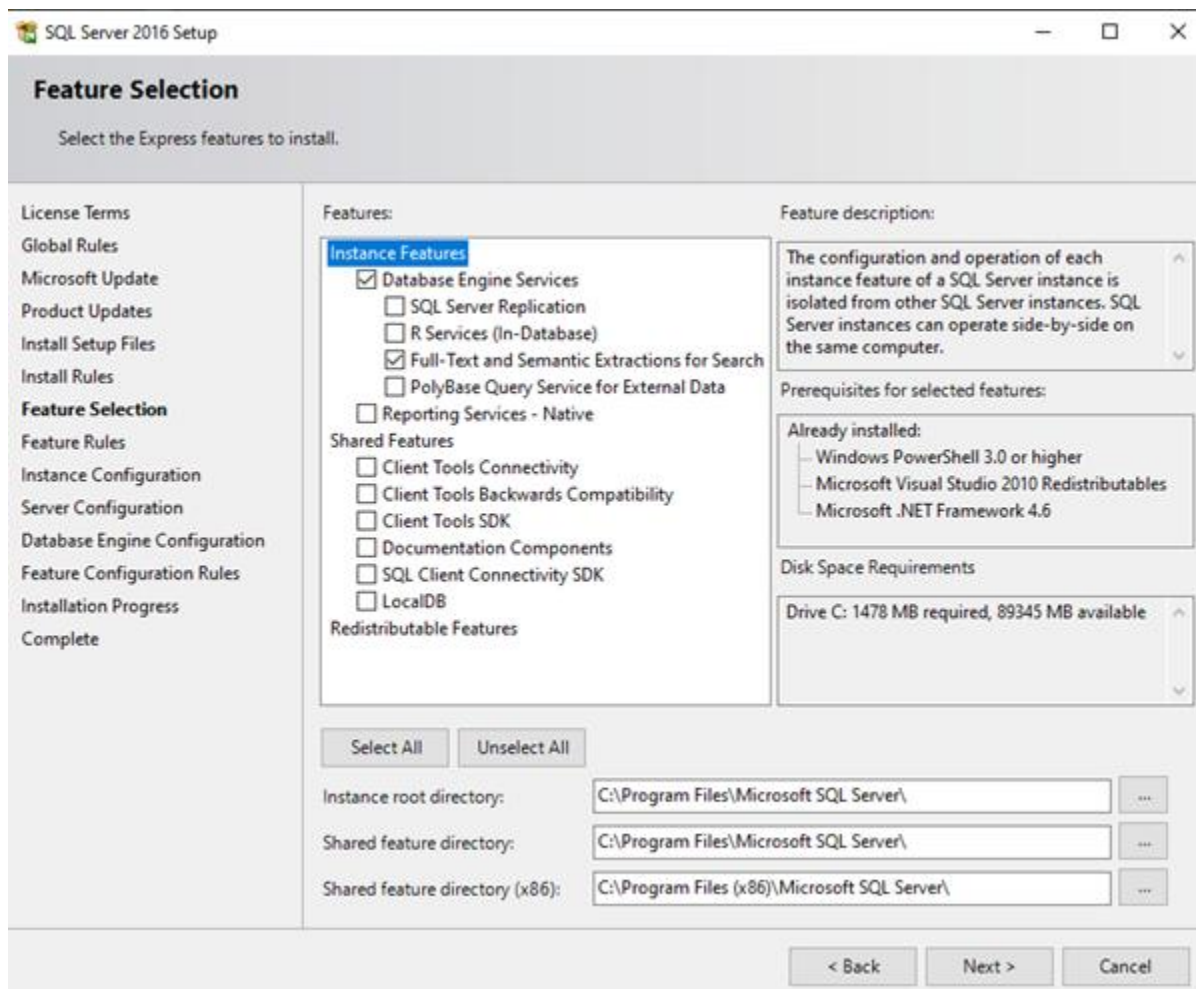
JD Molecule Sdn Bhd (844324-V)

Wisma JDM, 12, Jalan Astaka L, U8/L, Bukit Jelutong Business & Technology Center,
40150 Shah Alam, Selangor, Malaysia

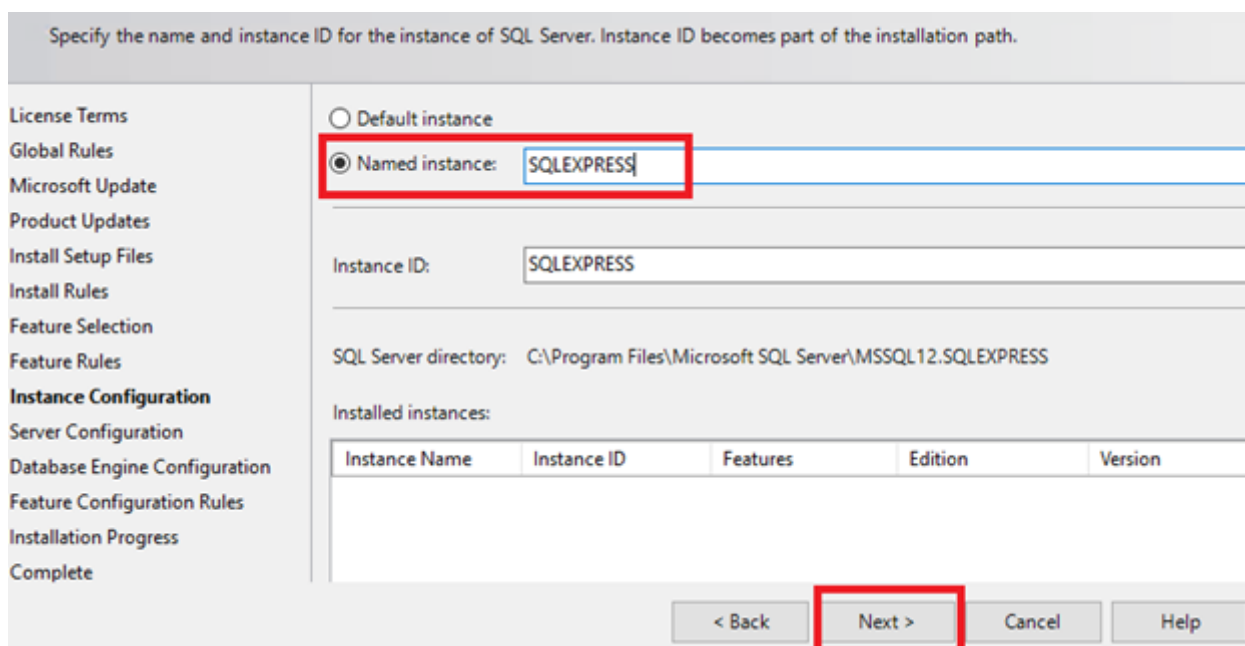
tel +603.7846.6018
skype jdmolecule

fax +603.7846.6068
website www.jdmolecule.com

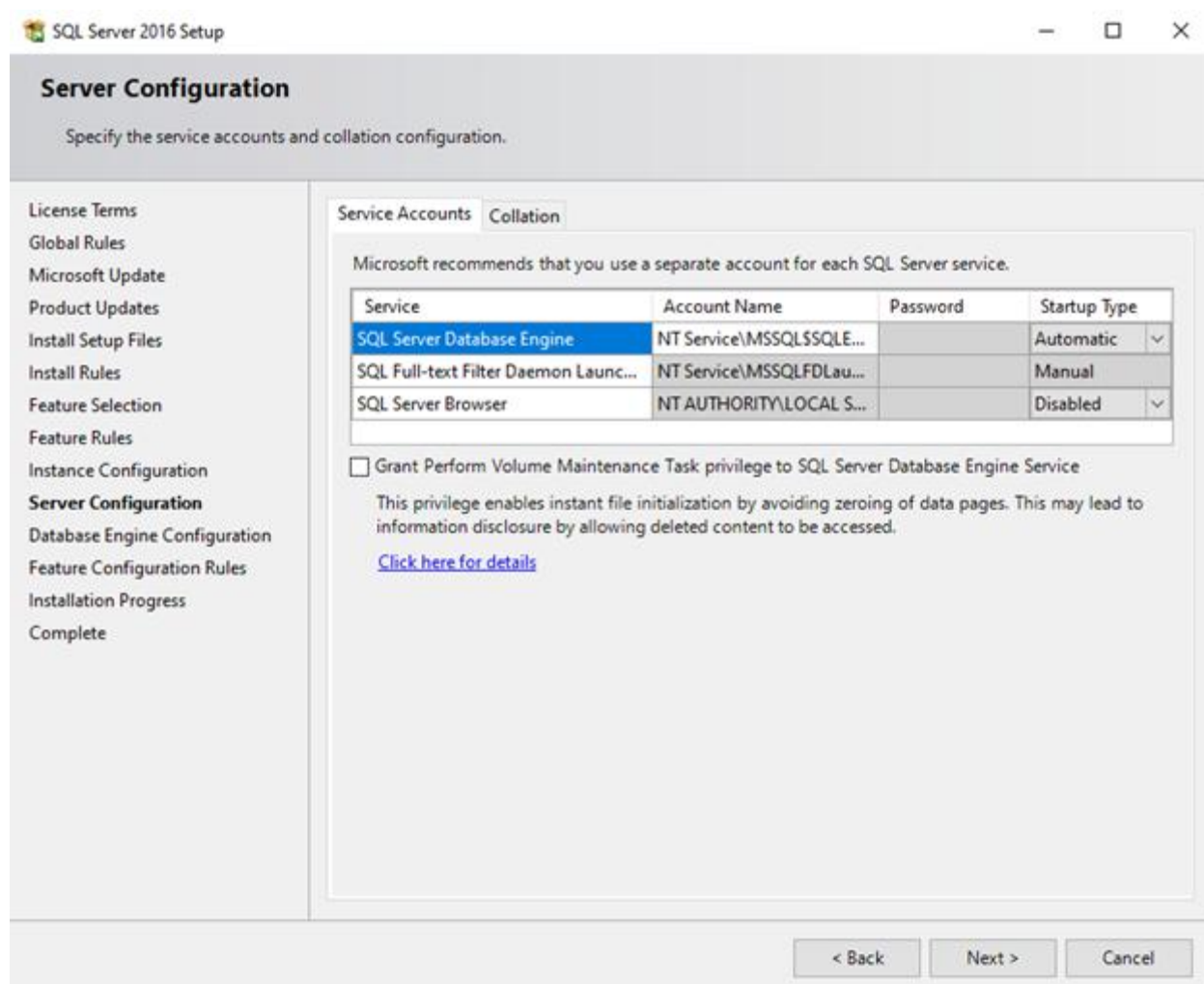
email outsourcing@jdmolecule.com



8. At this step you need to select **Named Instance**. You can let the default name **SQLEXPRESS** or use any other name and click **Next**



9. No action is needed on this page, click **Next**



10. Authentication mode: At this step, you need to select **Mixed mode**, this is an important step. Enter a password, that will be the password of the default **sa** SQL account. Then click **Next**.

Database Engine Configuration

Specify Database Engine authentication security mode, administrators and data directories.

License Terms
Global Rules
Microsoft Update
Product Updates
Install Setup Files
Install Rules
Feature Selection
Feature Rules
Instance Configuration
Server Configuration
Database Engine Configuration
Feature Configuration Rules
Installation Progress
Complete

Server Configuration | Data Directories | User Instances | FILESTREAM

Specify the authentication mode and administrators for the Database Engine.

Authentication Mode

☐ Windows authentication mode

☒ Mixed Mode (SQL Server authentication and Windows authentication)

Specify the password for the SQL Server system administrator (sa) account.

Enter password:

Confirm password:

Specify SQL Server administrators

TEST-INST-WIN10\Navori (Navon)

SQL Server administrators have unrestricted access to the Database Engine.

Add Current User | Add... | Remove

< Back | **Next >** | Cancel | Help

SQL Server 2016 Setup

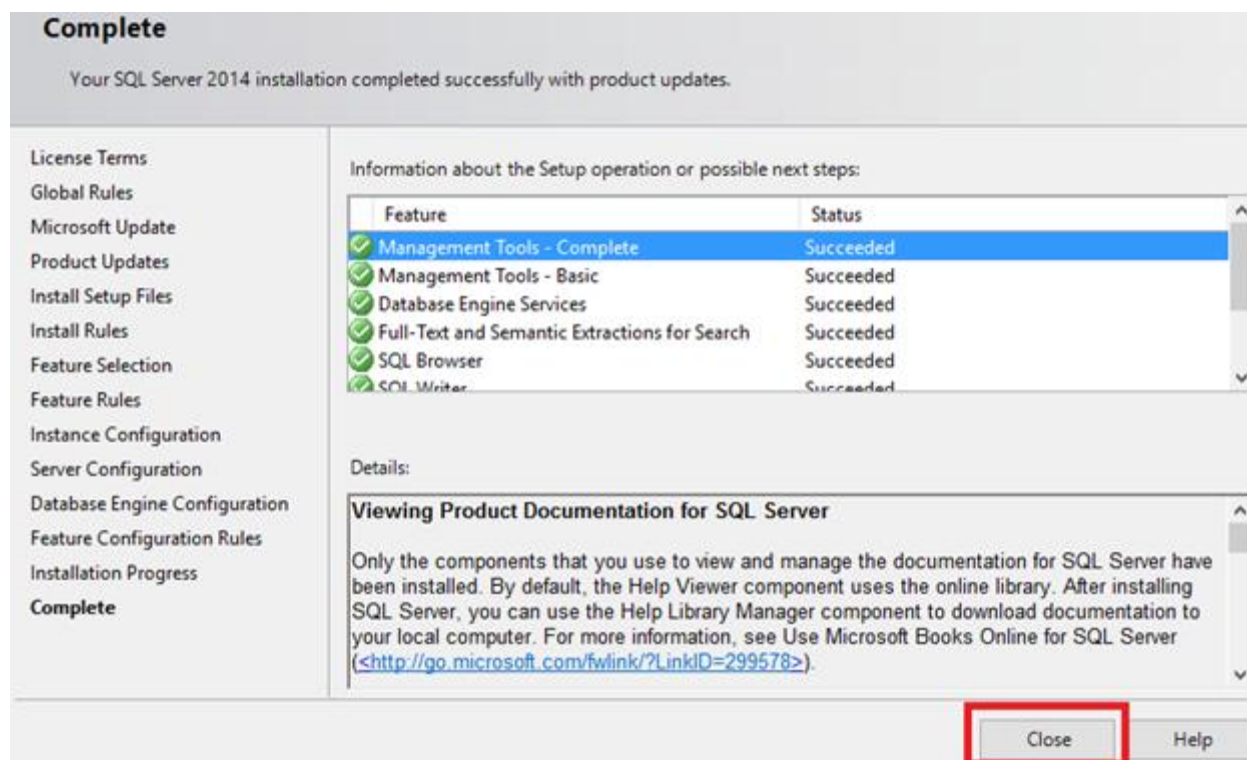
Installation Progress

Global Rules
Product Updates
Install Setup Files
Install Rules
Installation Type
License Terms
Feature Selection
Feature Rules
Instance Configuration
Server Configuration
Database Engine Configuration
Feature Configuration Rules
Installation Progress
Complete

Copy32bitPerfCounterDllFileToWow

Next > | Cancel

11. You have successfully installed SQL Server, Click **Close**



Microsoft SQL Server is now installed.

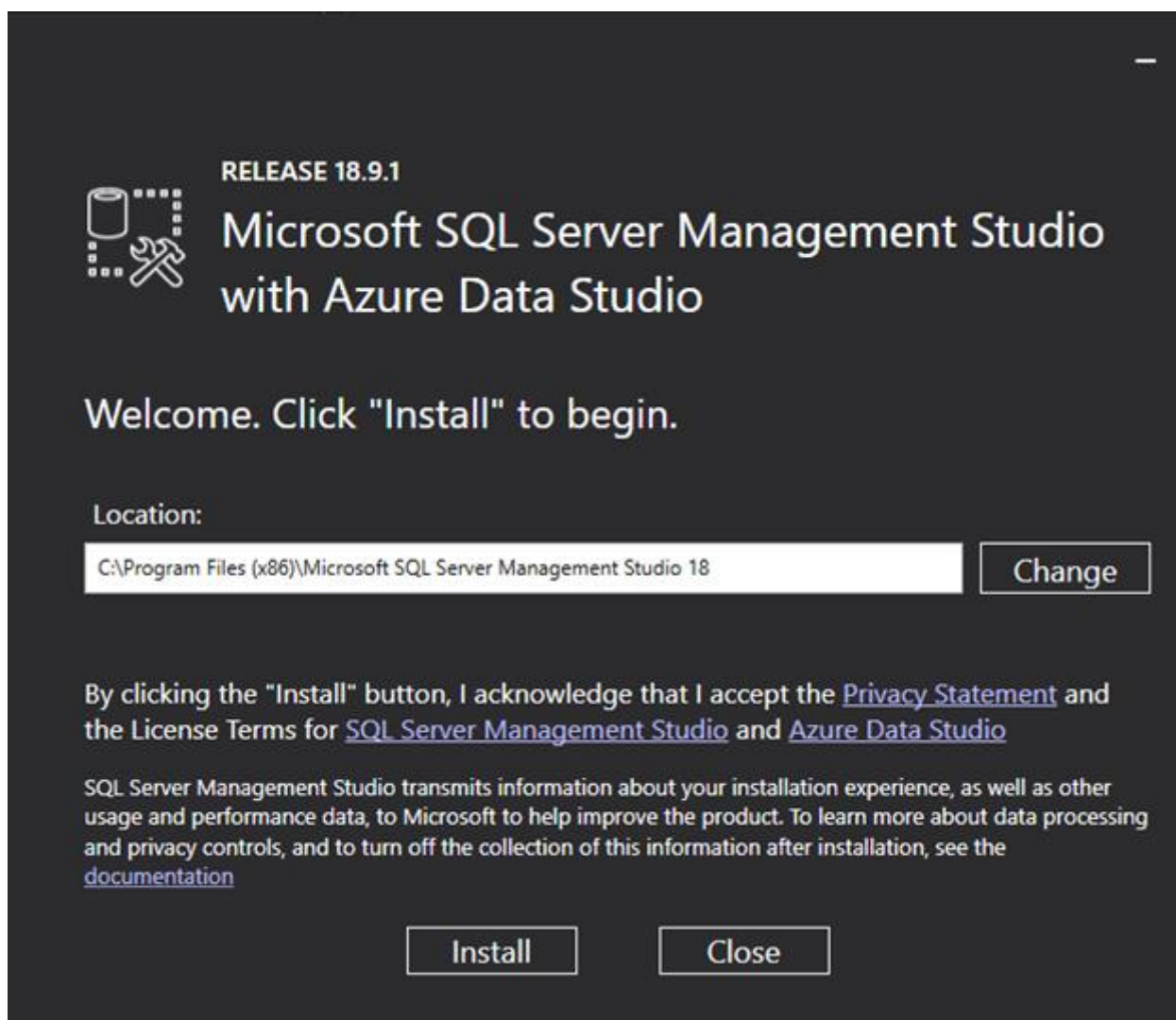
Now you may want to create an SQL account, dedicated to Navori.

Launch SQL Management Studio program.

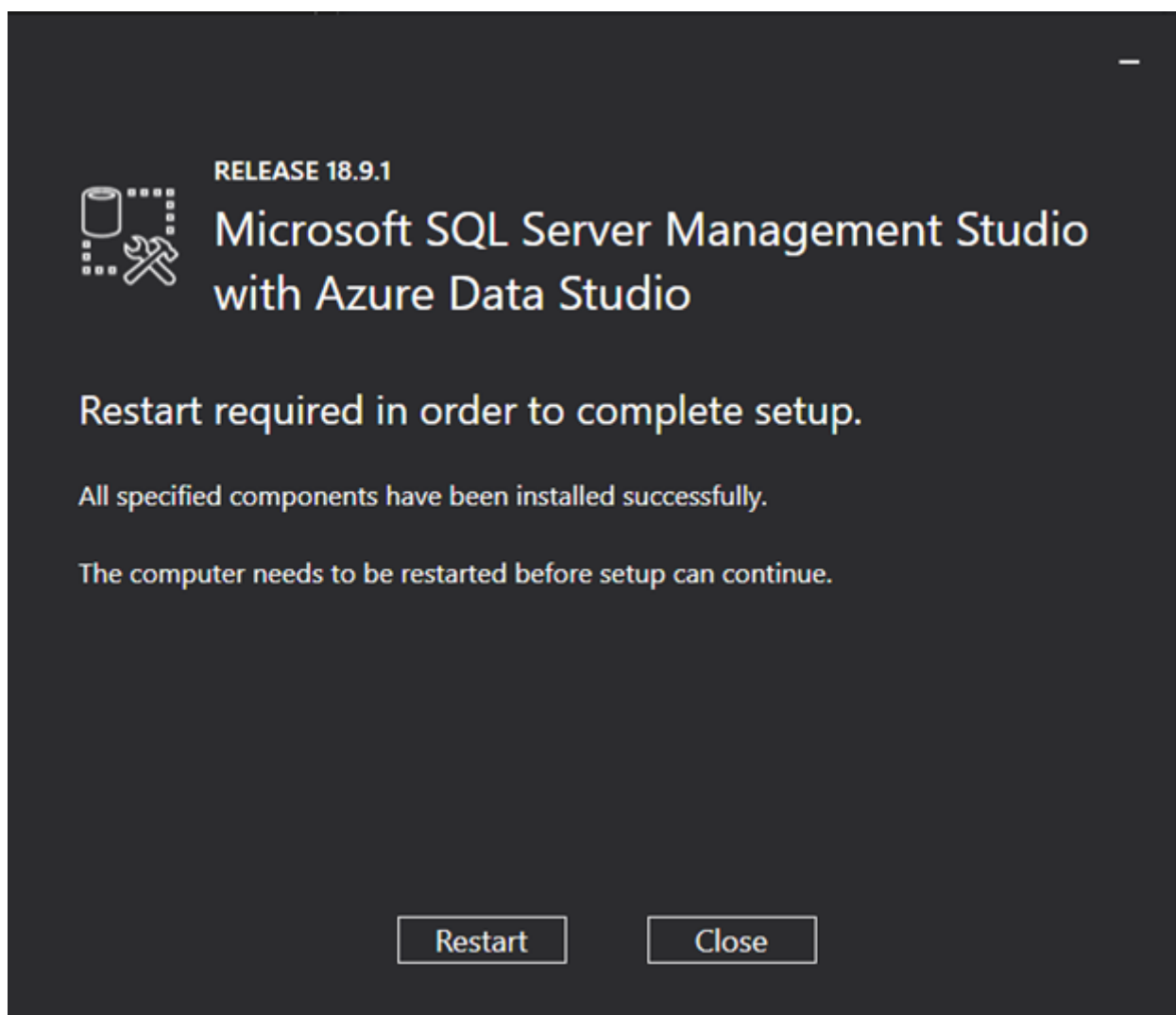
If you do not have SQL Studio Management Installed, please [install](#) it.

Use the provided link on the SSMS page to download the latest version of SSMS

Once downloaded launch the SSMS installer, and select click install.

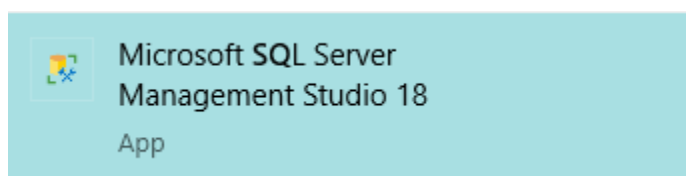


Once the install is complete, click **Restart**. You have now successfully installed SSMS.

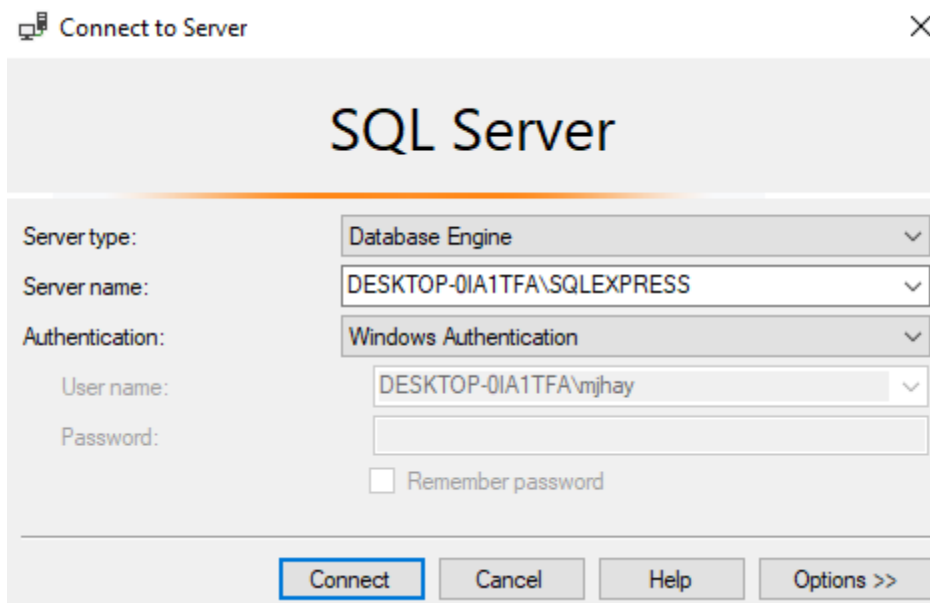


2. SQL Server Configuration Setup

Launch Microsoft SQL SERVER MANAGEMENT STUDIO



The server name should be correct by default. Select **Windows Authentication** and hit the **Connect** button.

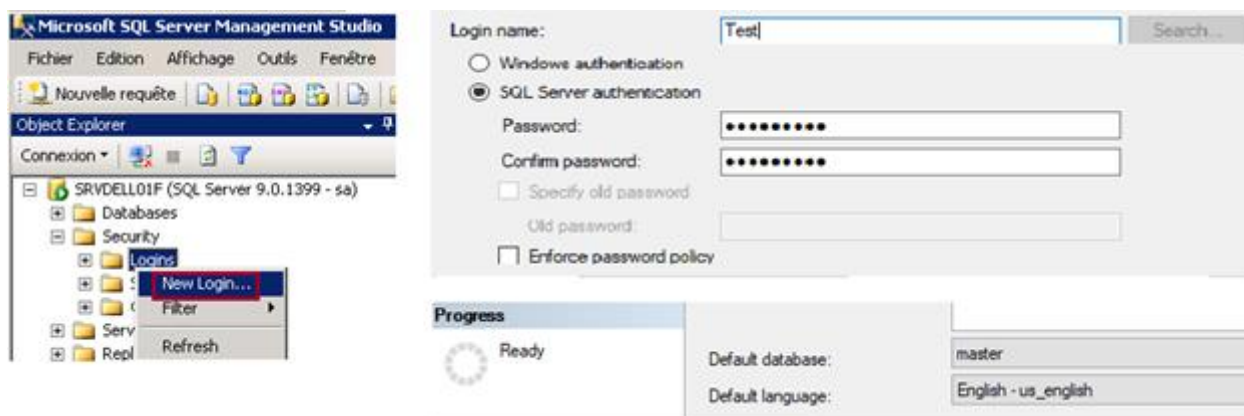


3. Once you are connected to your SQL server open the Security folder, right-click on **Logins** and select **New Login**

When creating your new login account you must set it to **use SQL Server Authentication**.

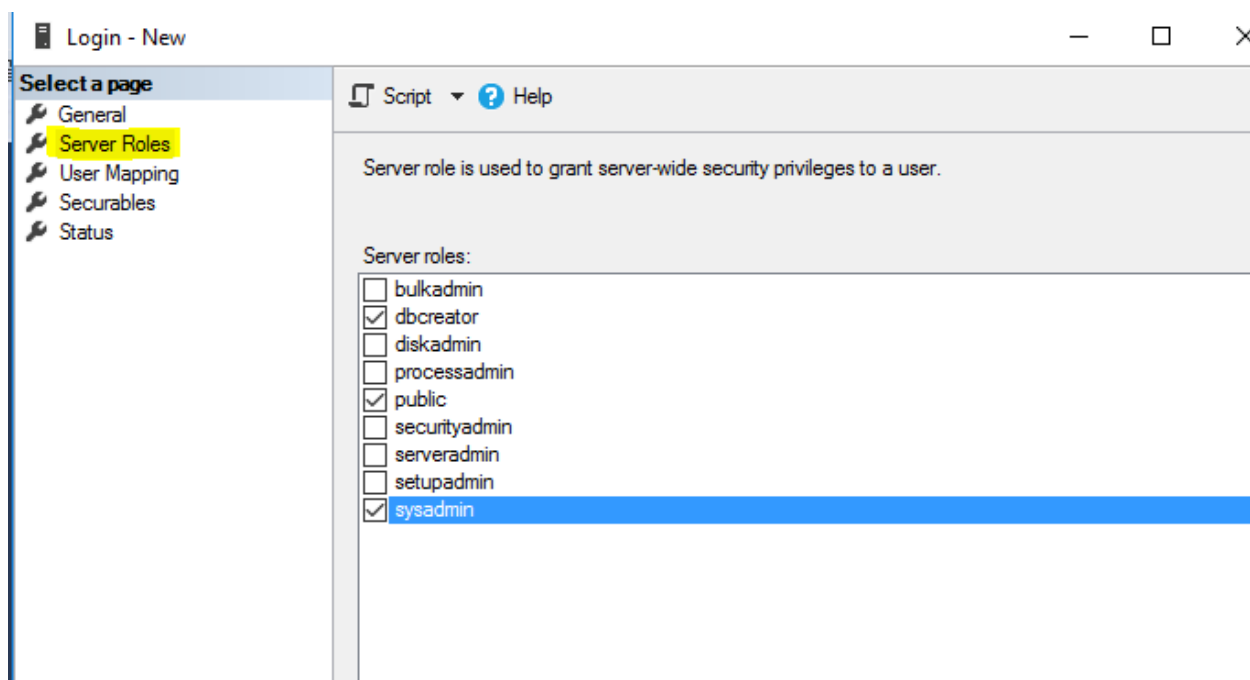
Note when setting your secure password: Please do not use characters that can truncate the connection strings, like ('), (").

Uncheck **Enforce password expiration** to prevent the password from expiring.
Set the default database to master and Default language to **English**



Next, you must assign the **Server Roles** and **User Mappings** settings.
Under **Server Roles**, select **dbcreator**, **public**, and **sysadmin**.

Note: The **dbcreator** and **systemadmin** role are only required for the QL Server Installation and can be removed after the QL Server Installation is complete



Under **User Mapping** select **Master** in the top pane and **db_accessadmin**, **db_owner**, and the **public** in the bottom panel.

Click OK to save the user.

Login - New

Select a page

General
Server Roles
User Mapping
Securables
Status

Connection

Server:
SVRQL03\SQLEXPRESS
Connection:
NAVORIV.sen
View connection properties

Progress

Ready

Script Help

Users mapped to this login:

Map	Database	User	Default Schema
<input checked="" type="checkbox"/>	master	test	...
<input type="checkbox"/>	model		
<input type="checkbox"/>	msdb		
<input type="checkbox"/>	tempdb		

☒ Guest account enabled for: master

Database role membership for: master

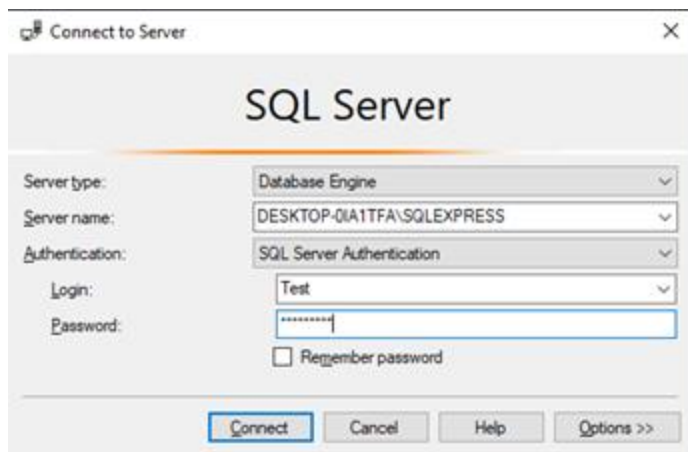
<input checked="" type="checkbox"/>	db_accessadmin
<input type="checkbox"/>	db_backupoperator
<input type="checkbox"/>	db_datareader
<input type="checkbox"/>	db_datawriter
<input type="checkbox"/>	db_ddladmin
<input type="checkbox"/>	db_denydatareader
<input type="checkbox"/>	db_denydatawriter
<input checked="" type="checkbox"/>	db_owner
<input type="checkbox"/>	db_securityadmin
<input checked="" type="checkbox"/>	public

OK

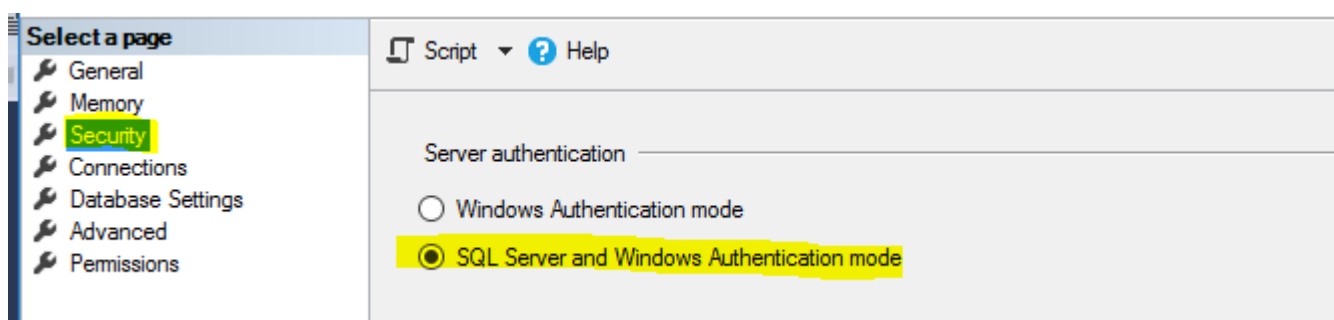
Cancel

When you have completed creating this login account, your SQL Server will be ready to use.

Test out your new SQL login user by connecting to the SQL Server using SQL Server Management Studio and the new login account.



If the connection fails, make sure your SQL Server is configured to accept both authentication modes. To check this open the Server > Properties and go to the Security tab.



Under Server Authentication, make sure to select SQL Server and Windows Authentication mode. Restart SQL Server. Try connecting to your SQL server using the new Login account again to confirm that it works. The next section describes how to configure Microsoft IIS server so it can be used with Navori QL Server.

Special considerations for SQL Server in a DMZ

1. By default, Navori QL looks to access the SQL Server via a name and not an IP address.
2. If your SQL Server installation is set up so that the SQL Server Name corresponds to an **IP:Port Number** (such as is the case in a DMZ

Eg. you must enter the address as in the following example: 10.2.230.4,5000 (substitute the example IP address and port number with your installation IP and port).

Note- You must separate the IP address from the port number using a comma (,) and not a semicolon (;).

2. Installing Navori QL Server

1. First, you will need to download the QL Server installer from your Navori Extranet account. To do so, login to your account from <https://navori.com> or <https://extranet.navori.com>

Login

Please log in to access software trials, manage your current subscription, purchase and manage your on-premise software licenses, or open a technical support ticket.

Test@gmail.com

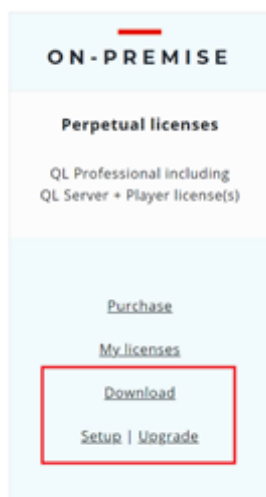
Email

Password

[Forgot your password?](#)

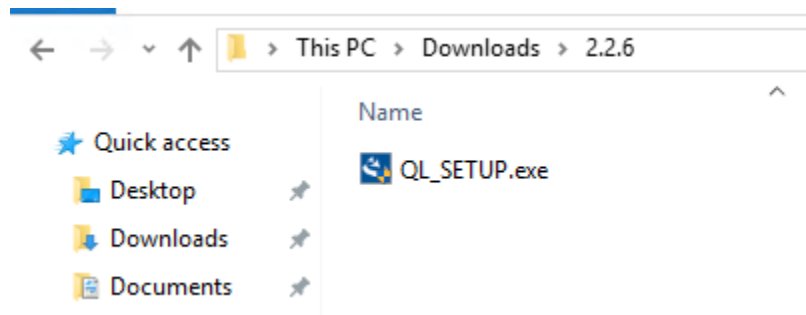
LOGIN

Once you are logged in, you can download the QL Server Software.



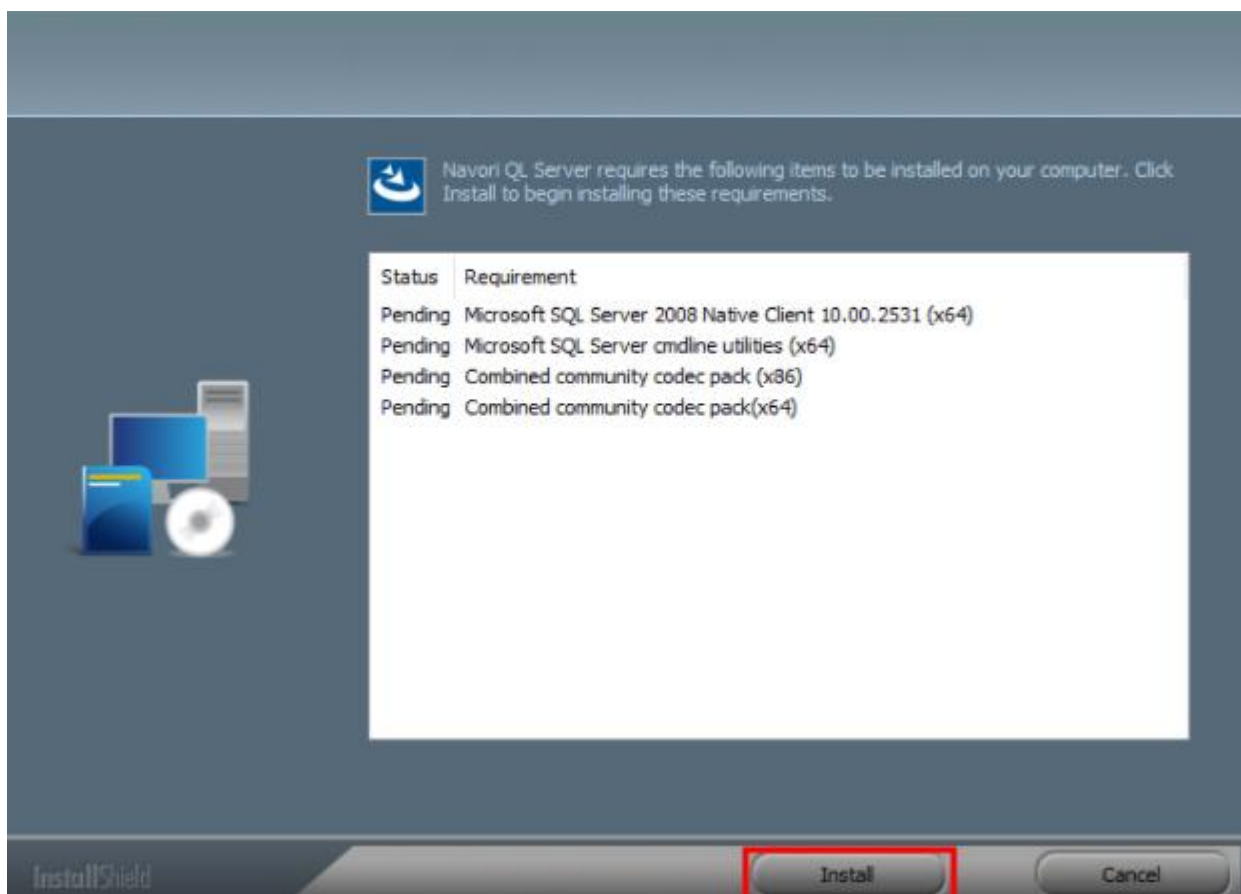
2. Launch the installer (right-click > run as Administrator) and follow the steps.

Note- Please ensure you are logged in with a local PC administrator account when installing the QL server.

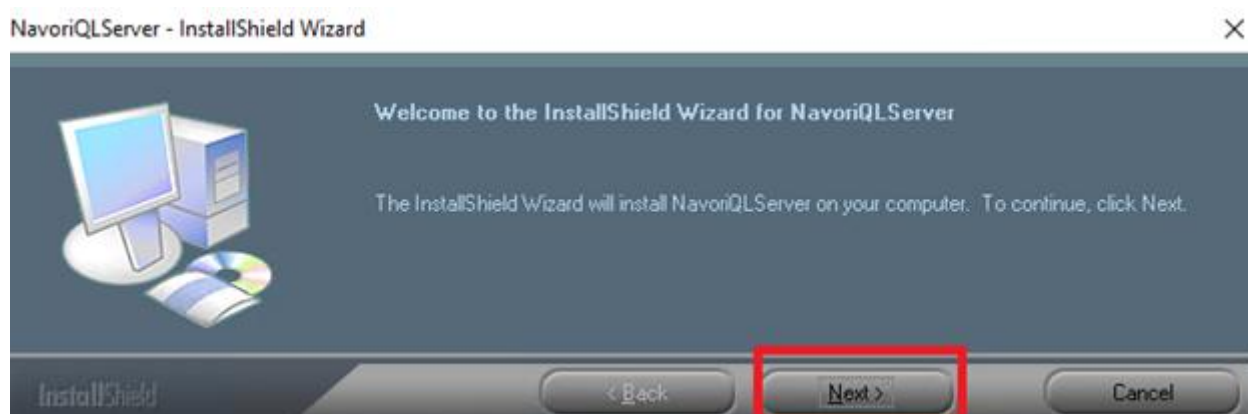


3. Click **Install**

Note: The Navori QL installer will install all prerequisites. Adobe Flash and/or other requirements may be listed, as this is dependent on what prerequisites your machine does not currently have installed.

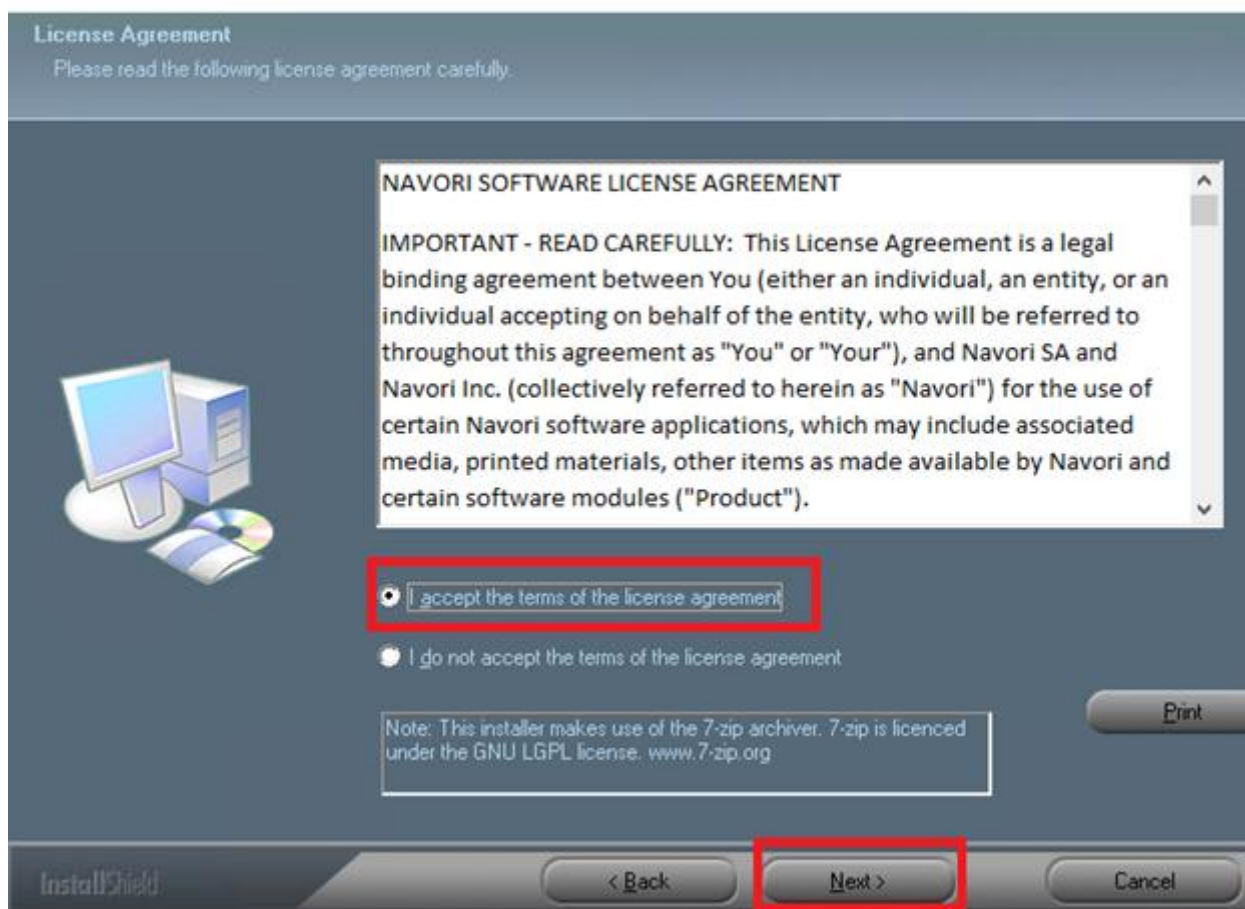


Click **Next**



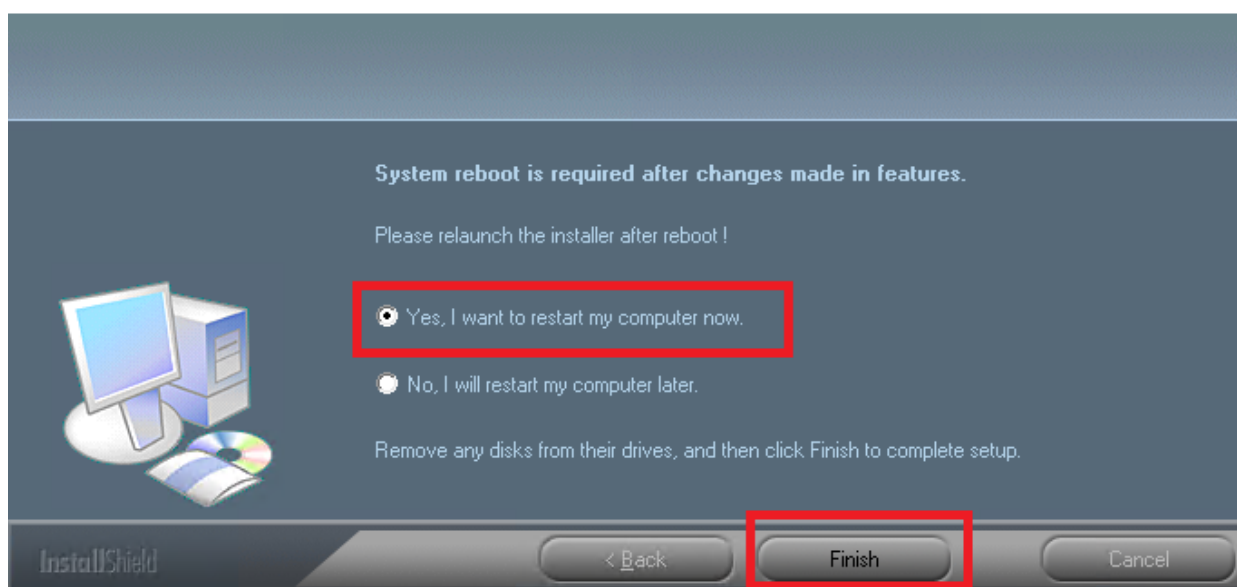
Agree to the TERMS AND CONDITIONS and click **Next**

NavoriQLServer - InstallShield Wizard



At some point, you will need to reboot the machine.

NavoriQLServer - InstallShield Wizard



After the PC reboot, the Installer should automatically relaunch, if not you can relaunch the installer.

If you run into an infinite reboot loop, please see **FAQ: [How to fix infinite reboot loop](#)**

IMPORTANT POINTS:

2. First, you will have to check the internet connection. The installer needs it in order to activate the license.
3. If needed, you can enter proxy information.
4. Then you will need to enter some information.
5. SQL Server: the installer will automatically retrieve the local instance, but you can enter other values, for example, if the SQL server is installed on another server.
6. Enter the username and password of the SQL user you created previously. Hit the **verify** button.
7. Navori Extranet Credentials: enter your Navori account credentials, and copy-paste the serial number from the delivery note. Hit the **verify** button.
8. Navori QL Server Configuration: enter the server address, and select a folder in which Navori will store its media files (must be a local disk).

Note: As of QL 2.2.5 Navori no longer asks for an IP Address or DNS, your server will be installed with HTTP://Localhost by Default and you may use your IP or DNS to access your Navori QL Manager.

Press TEST CONNECTION if you do not use a Proxy and Press Next

If you require a proxy please enter your proxy information and press Test Connection to confirm.

Test Connection

☒ This server is under a Proxy (Configure Proxy Settings)

Proxy Settings

☐ Use Default Proxy

URL:

Port:

Use

Logins:

Password:

Navori QL Server - InstallShield Wizard

Connection Test successful!
Please continue through the installation.

OK

Verify Proxy Settings

Internet Information Service (IIS) settings

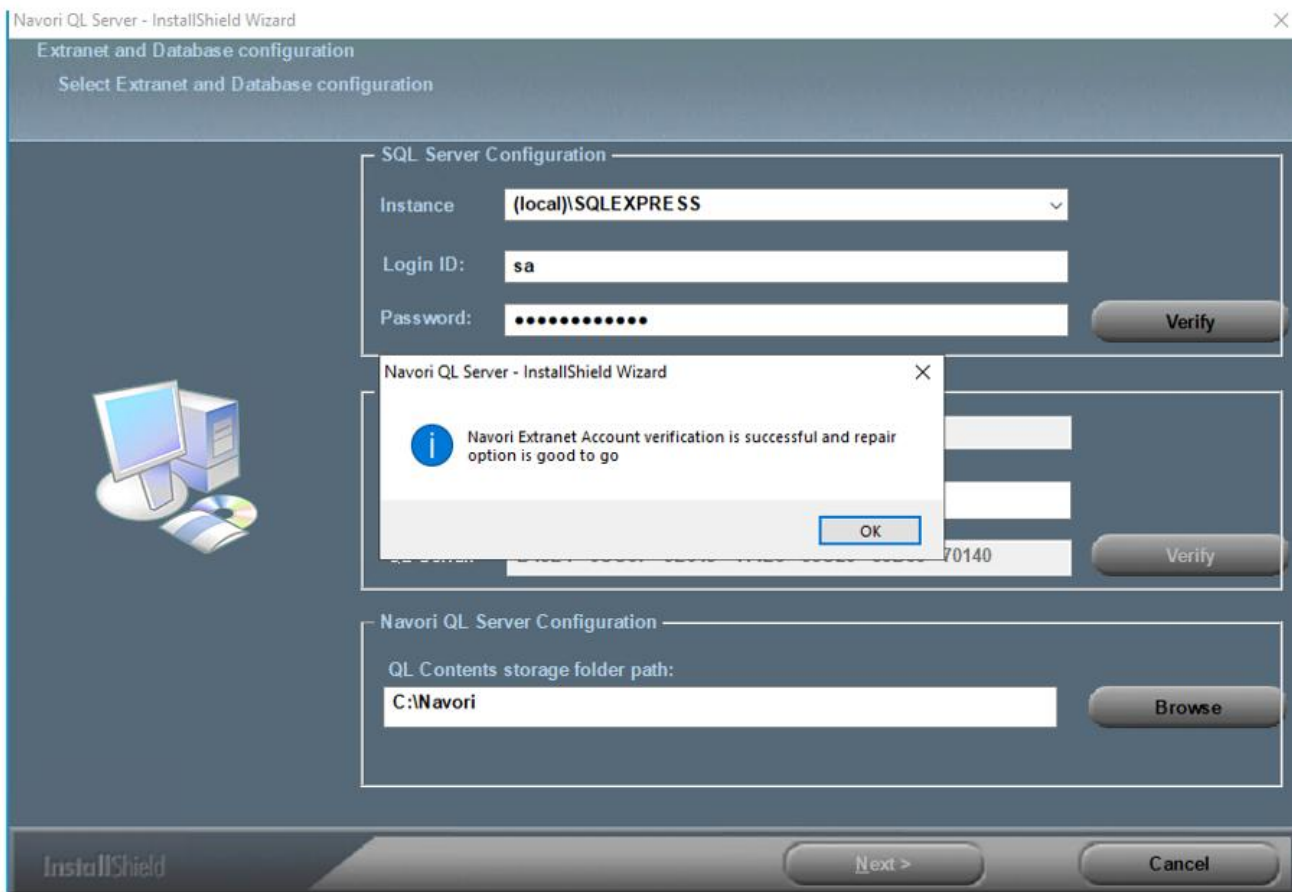
Site Name* **Navori**

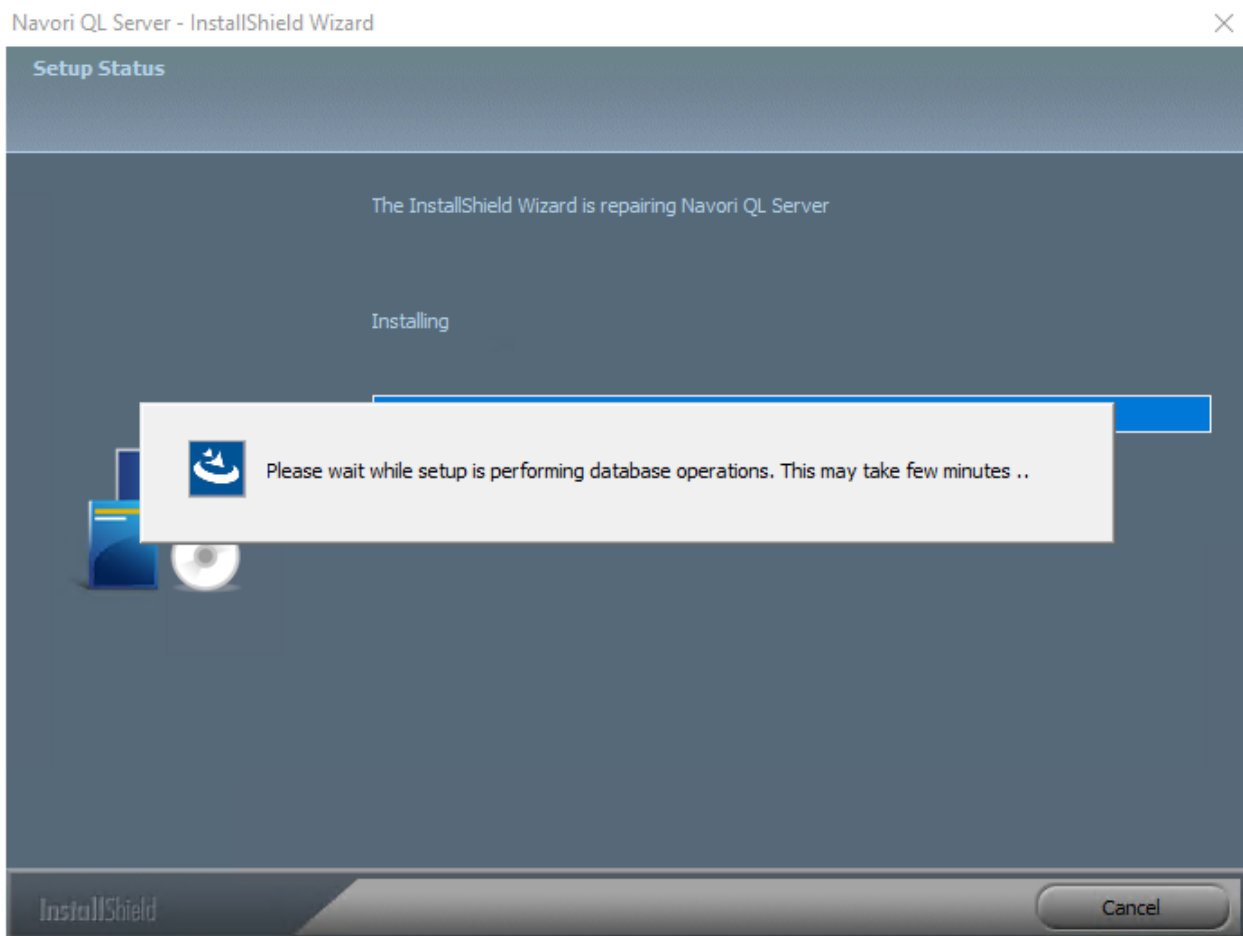
Port 80

*SiteName may be ignored if there is already a site hosted on specified port

[< Back](#)

Cancel

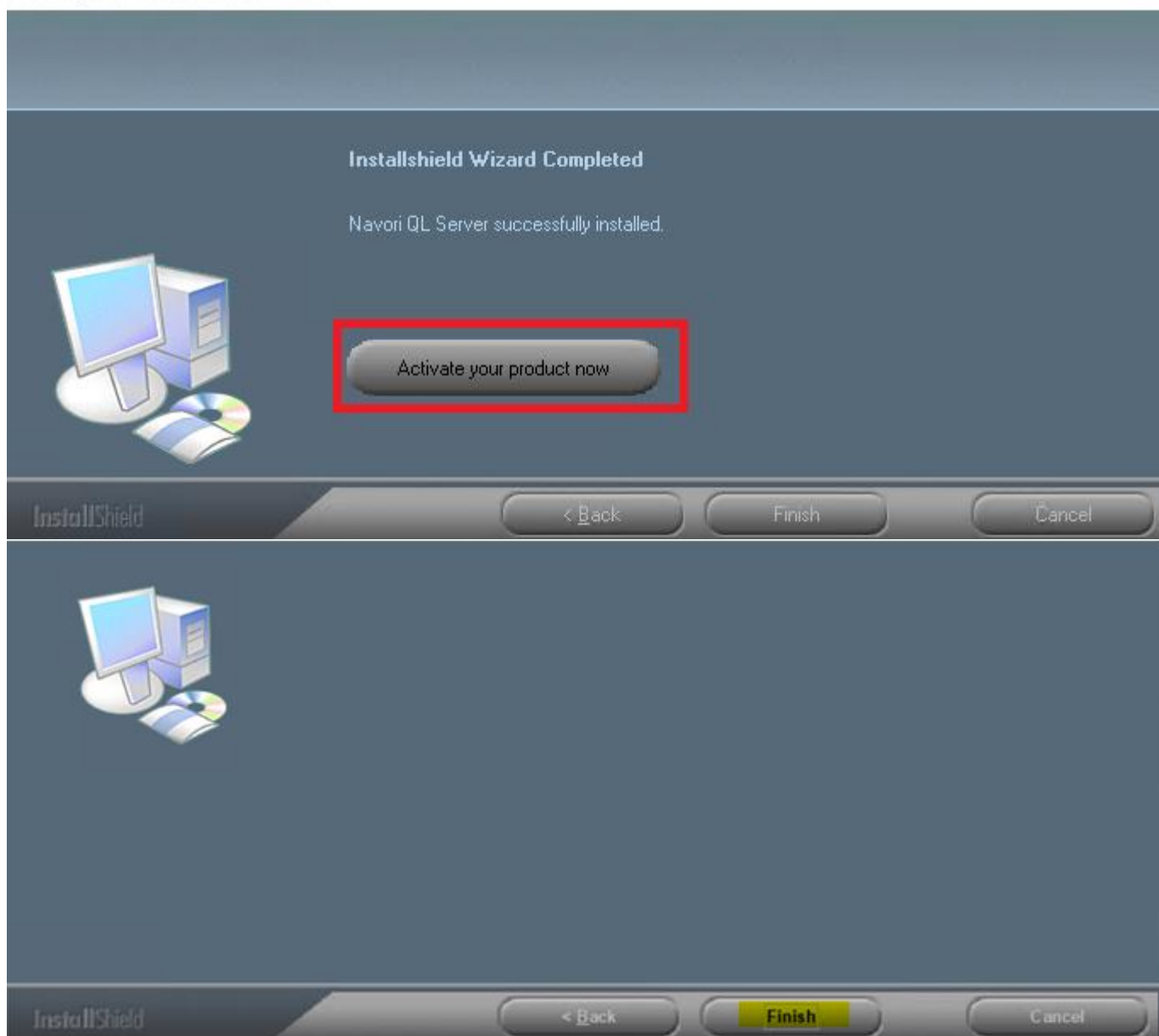




When the installation is done, Click **Activate your product now** and click **Finish**. You Must Activation your product.

Note: If your activation failed see [FAQ: Activation Failed](#)

NavoriQLServer - InstallShield Wizard



1. Upon successful license activation you will see the message **Product activated successfully**.
2. Leave the Run NavoriQLServer now box checked to automatically launch the application in your web browser.
3. Click the Finish button to close the installer.
4. If you left the Run NavoriQLServer now box checked Internet Explorer will launch and you will be presented with the QL Manager login page.
5. Navori QL Server is automatically configured with a default user account created from your Navori Extranet email address and password.
6. You will log into your QL Manager using your Navori Extranet credentials.

3. Logging into you CMS

Default User Account

The installer will create a default user account. This account has root administrative rights for this Server and is created during the Server installation using your Navori Extranet credentials (email address and password).

JD Molecule Sdn Bhd (844324-V)

Example: Your Navori Extranet login name is **test@navori.com** and your Navori Extranet password is: **Navori@123**. Once you have completed your Navori QL Server installation you can log into your server using your Extranet account.

When you type your login name and password into the QL Manager login screen and press the Connection button, you will see a loading screen followed by the QL Manager application interface.

test@navori.com

.....

English ▼

Connection

Forgot Password?

Version: 2.2.6, Published on: 10 Jun 2021, 16:13:06

Your Navori QL Server software is now installed successfully and running.