

- **QL Server IIS HTTPS over SSL Setup**
- **Configure SSL Settings.**
- **PLEASE NOTE QL SERVER 2.0, and above does NOT support self-signed certificates.**

You may review this video however please be aware the video below is from an older version of the software so you should reference **QLManager** in version 2.2.5 and above. [QLServer IIS https Setup.zip - Video](#)

If you are Renewing an expired certificate: Please refer to the following [link](#)

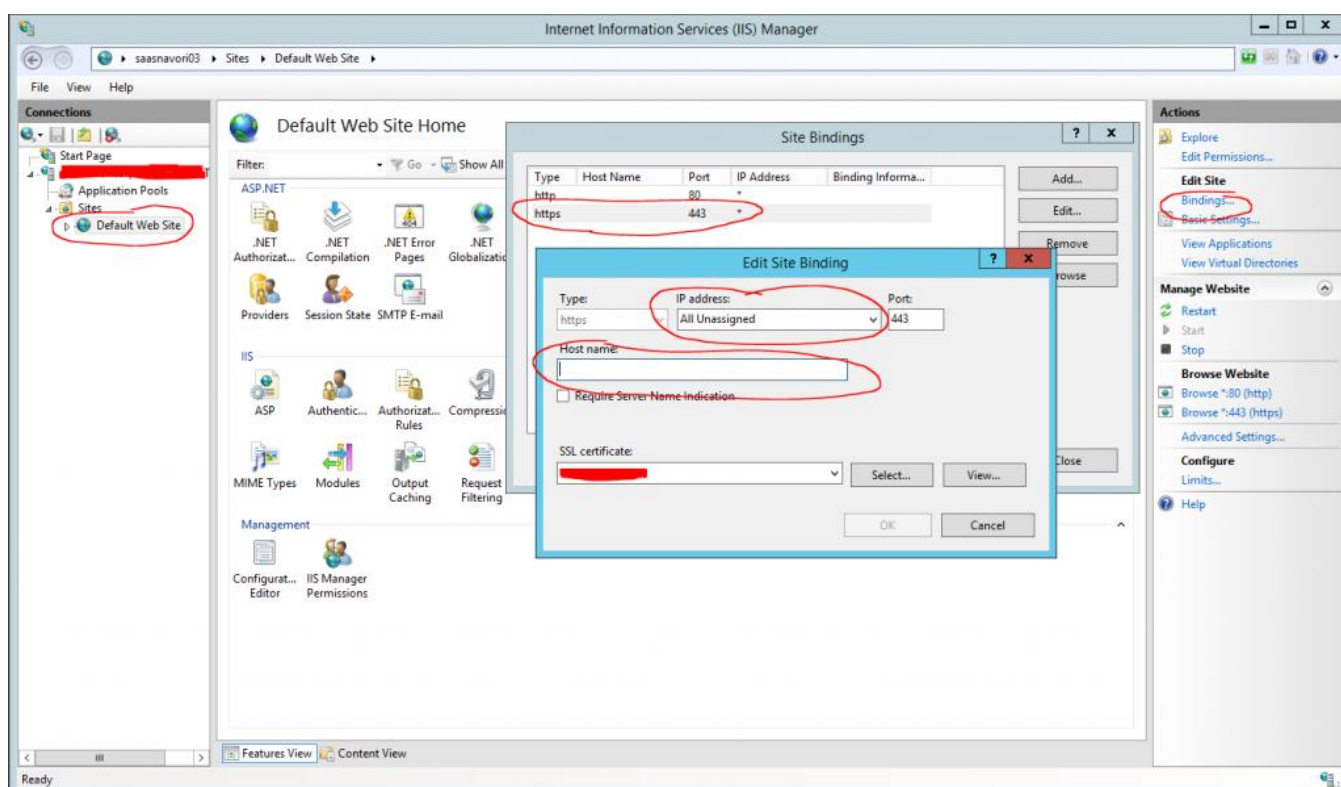
Here are the steps required to activate SSL in IIS to secure the connections between your Navori QL Server and QL Manager users.

The purchase and creation of the SSL Certificate is on the responsibility of the customer, please have your SSL certificate created within IIS before proceeding through the instructions.

1. Create an SSL Binding

Select a site in the tree view and click Bindings... in the Actions pane.

This will bring up the bindings editor where you can create, edit and delete bindings for your Web site. Click Add... to add a new SSL binding to the site.



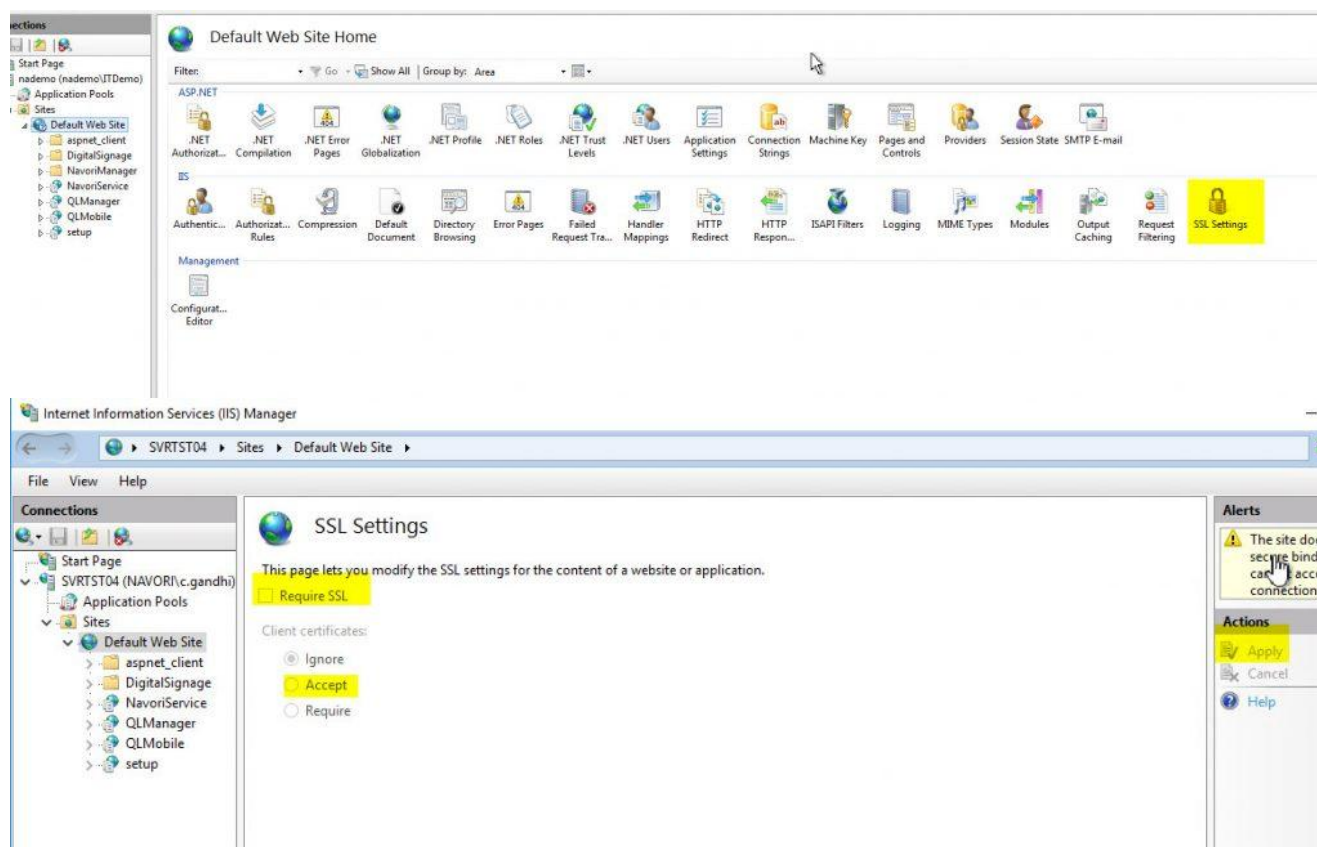
The default settings for a new binding will be set to HTTP on port 80.

1. Select HTTPS in the Type drop-down list IP Address to All unassigned Port: 443 Leave the Host Name completely blank (IMPORTANT)
2. Select the certificate you created from the SSL Certificate drop-down list.

3. Click OK to confirm your settings. Now you have a new SSL binding on your site. You should test to ensure you can access the secure connection.

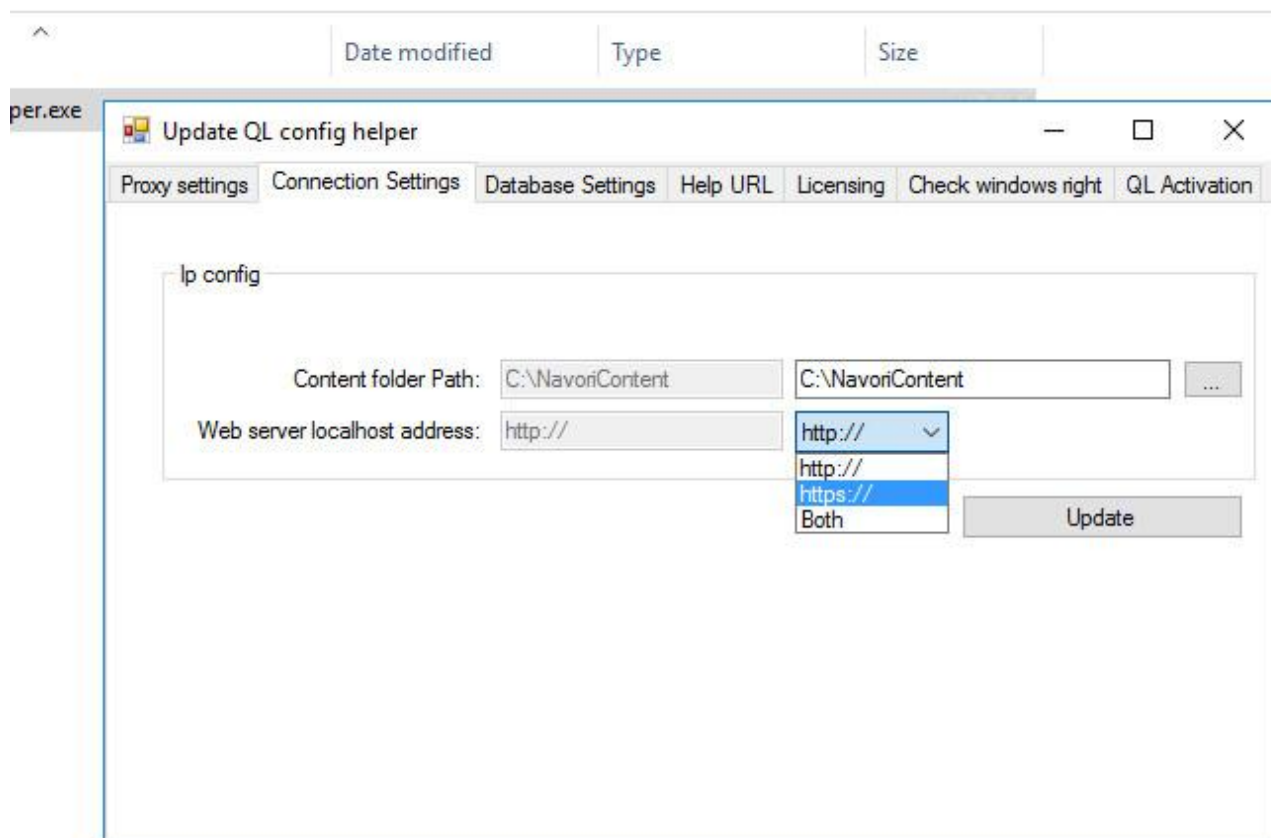
2. Configure SSL Settings. **(please note, this setting is no longer required and can be ignored, especially for clients using Load Balancer)**

You must configure the SSL settings if you want your site to enforce SSL connections or if you want the site to interact in a specific way with client certificates. Click the site node in the tree view to go back to the site's home page. Double-click the SSL Settings feature in the middle pane.

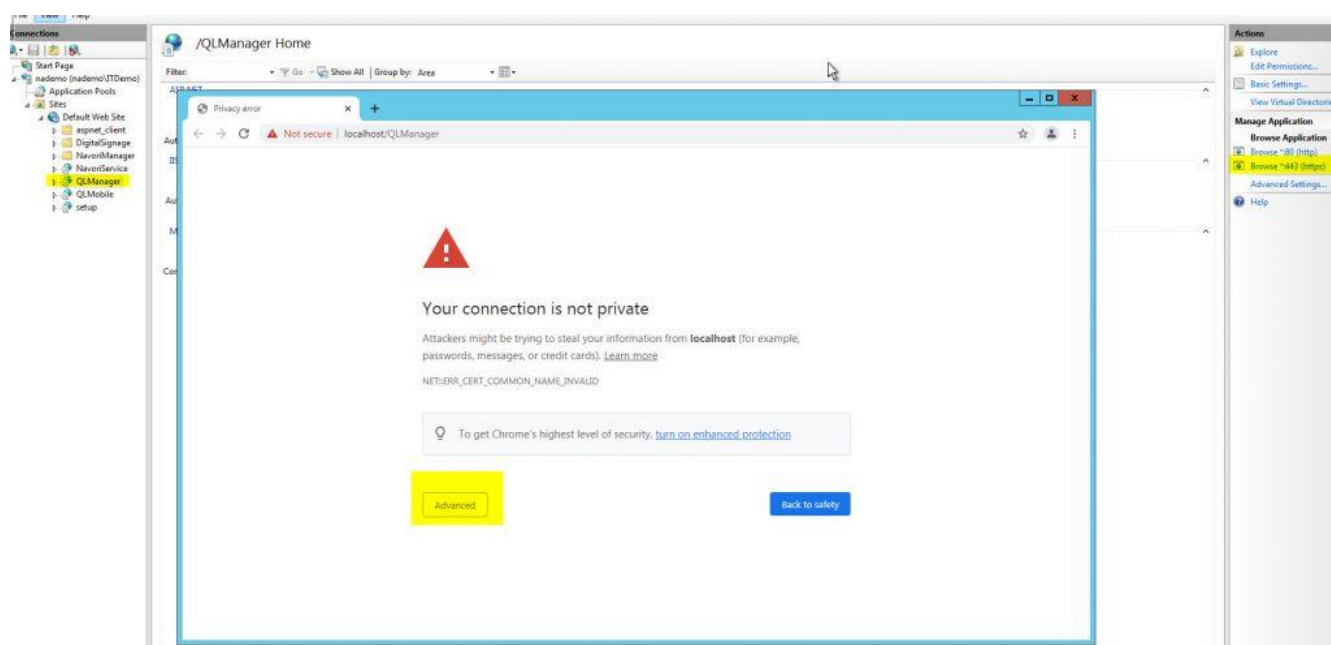


3. Change the connection settings in Navori Navigate to the Navori Confighelper tool: C:\Program Files\Navori\NavoriQLServer\NavoriQLConfigHelper You MUST right-click on the Confighelper tool and run as an Administrator.

if you do not, the tool will appear blank. Select the Connection Settings tab and modify the drop-down from http to HTTPS and select UPDATE to save changes.



4. Test the SSL Binding In the Actions pane, under Browse Web Site, click the link associated with the binding you just created. For QL Server 2.2.5 and above select QLManager Your web browser will open and you will see an SSL warning. Click Continue to this website (not recommended).



5. Confirm your server connection Once you have confirmed you can see your login screen, access your Server URL including the DNS eg: <https://na.navori.com/qlmanager/>, and confirm you can log in. Your QL Manager login page will then be displayed. Note the HTTPS prefix on the left of the URL.

https://na.navori.com/QLManager/#!/login

Login

Password

English

Connection

[Forgot Password?](#)

[Active Directory Authentication](#)

[ADFS Authentication](#)

Version: 2.2.5, Published on: 26 Jul 2020, 07:04:29